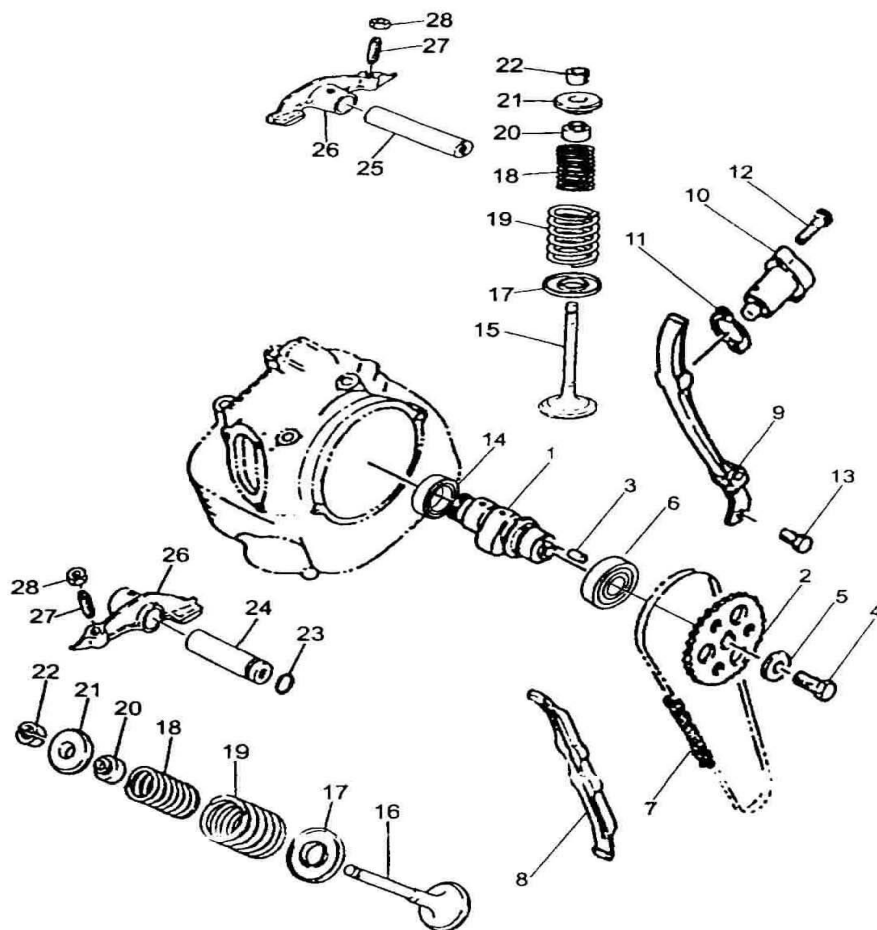


# JS250ATV-5 目录图册

序号                      Part No.                      名                      称                      Description

## 1、配气机构 Pneumatic mechanism

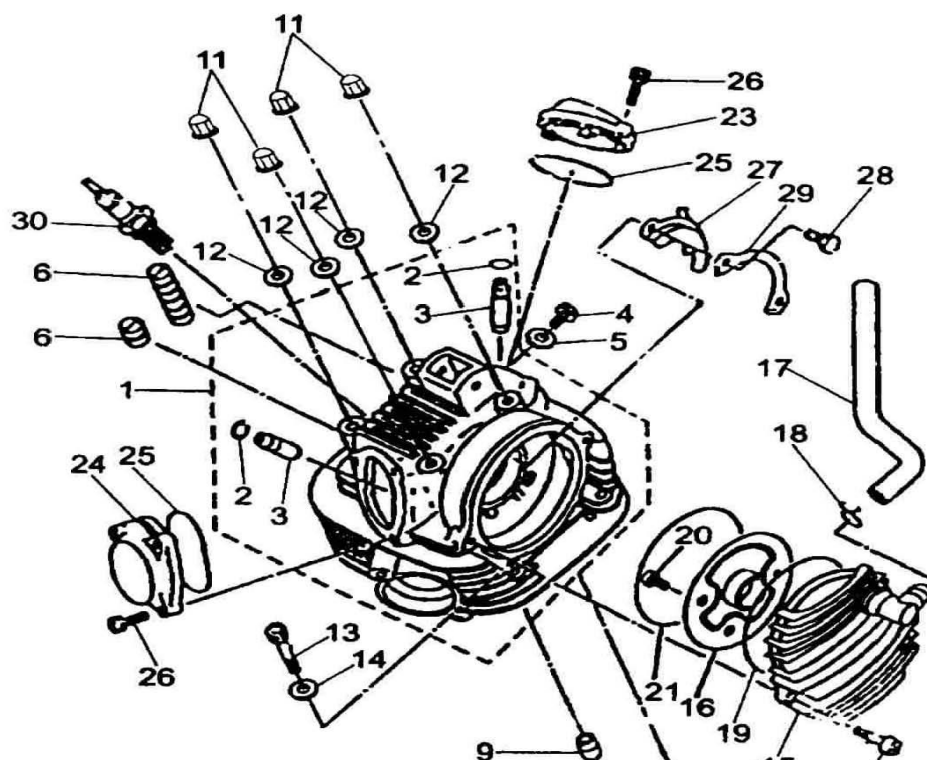


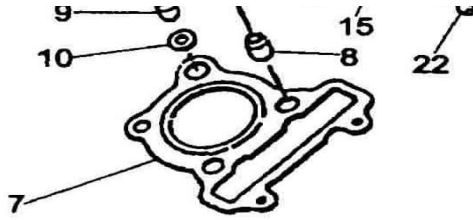
## 1、配气机构 Pneumatic mechanism

序号	Part No.	名                      称	Description	数量
1	FG-110201-0	配气凸轮轴	Pneumatic cam shaft	1
2	FG-100401-0	正时链轮	Timing sprocket	1
3	FG-100001-0	传动销	Driving pin	1
4	GB/T5786-2000	螺栓 M10*1.25*25	Bolt M10*1.25*25	1
5	FG100402-0	垫圈	Washer	1

6	GB/T276-1994	滚动轴承 6005-RS/C3	Rolling bearing 6005-RS/C3	1
7	FG-130000-0	正时链条	Timing chain	1
8	FG-140000-0	下导向板总成	Lower guide plate assy	1
9	FG-150000-0	上导向板总成	Upper guide plate assy	1
10	FG-120000-0	链条张紧器	Chain tensioner	1
11	FG-100801-0	张紧器垫片	Shim of tensioner	1
12	Q/JR YP80-2000	螺栓95026-06025	Bolt 95026-06025	2
13	Q/JR YP80-2000	螺栓 95026-06014	Bolt 95026-06014	2
14	GB/T276-1994	滚动轴承 6202-Z	Rolling bearing 6202-Z	1
15	FG-110304-0	进气门	air intake valve	1
16	FG-110303-0	排气门	Air exhaust valve	1
17	FG-110401-0	气门弹簧座	Valve spring seat	2
18	FG-110701-0	气门内弹簧	Valve inner spring	2
19	FG-110702-0	气门外弹簧	Valve outer spring	2
20	FG-112000-0	气门杆油封	Valve stem oil seal	2
21	FG-110301-0	气门弹簧盖	Valve spring cover	2
22	FG-110302-0	气门锁夹	Valve lock clip	4
23	FG-110601-0	O 形环	O-ring	1
24	FG-110002-0	摇臂轴 2	Rocker arm shaft 2	1
25	FG-110001-0	摇臂轴 1	Rocker arm shaft 1	1
26	FG-113000-0	气门摇臂	Valve rocker arm	2
27	FG-110851-0	调节螺钉	Adjusting screw	2
28	FG-110852-0	锁紧螺母	Locking nut	2

## 2、配气机构(气缸盖) Pneumatic mechanism (cylinder cap)

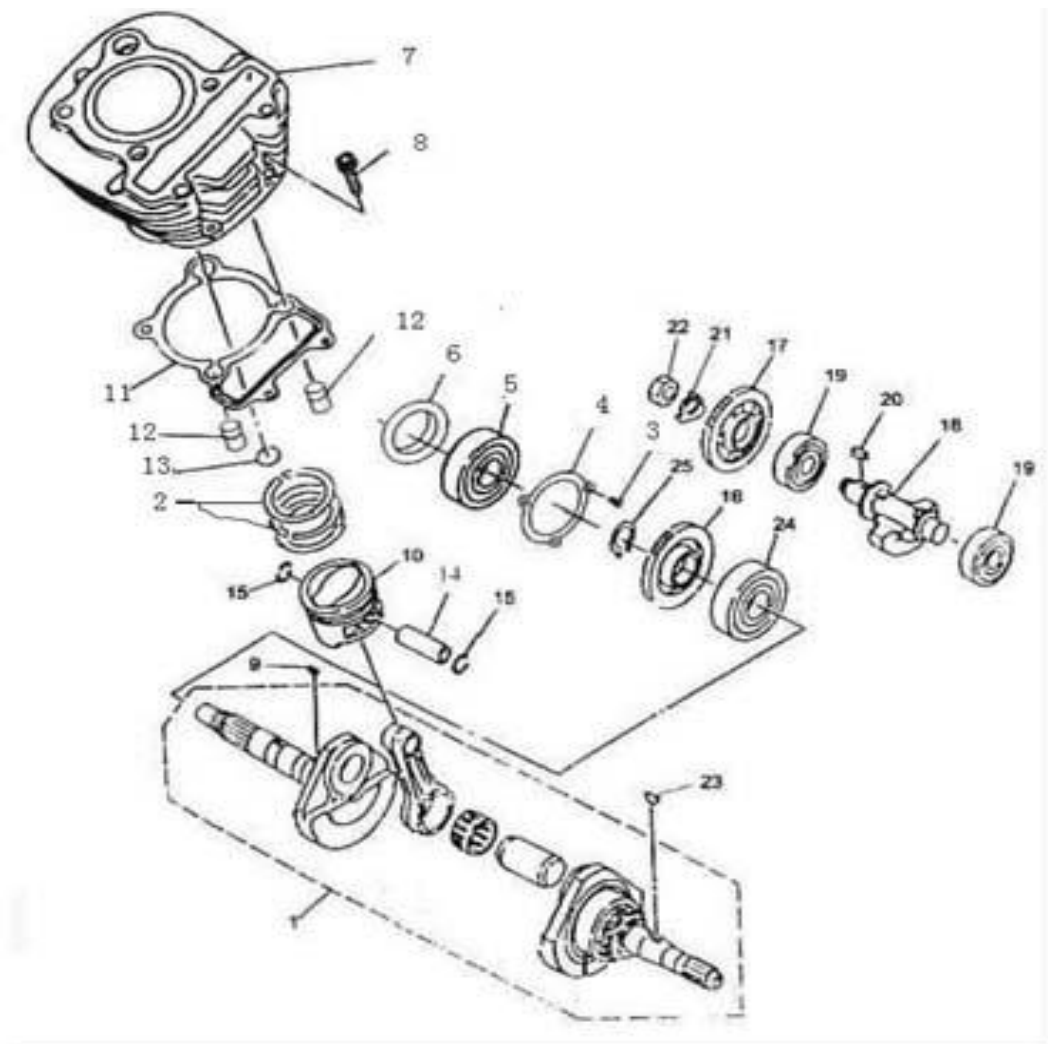




- 4 -

## 2、配气机构（气缸盖） Pneumatic mechanism (cylinder cap)

1	FG-111000-0	气缸盖组合	Cylinder cap unit	1
2	FG-111701-0	钢丝挡圈	Steer wire circlip	2
3	FG-111751-0	气门导管	Guide pipe of valve	2
4	Q/JR YP80-2000	螺栓95026-06010	Bolt 95026-06010	1
5	FG-100405-0	垫圈	Washer	1
6	FG-100604-0	减震块	Damper	8
7	FG-101000-0	气缸盖垫片组合	Cylinder cap shim unit	1
8	Q/JR YP96-2000	定位销 99510-14016	Alignment pin 99510-14016	2
9	FG-100002-0	定位销	Alignment pin	1
10	FG-1000603-0	油封	Oil seal	1
11	ZA1-101000-0	盖形螺母	Cap nut	4
12	ZA1-100404-0	垫圈	Washer	4
13	GB/T70.1-2000	螺钉 M8*45	Screw M8*45	2
14	GB/T848-2000	垫圈 8	Washer 8	2
15	FG-103000-0	链轮室盖组合	Sprocket chamber cover unit	1
16	FG-102000-0	挡油盘组合	Oil baffle unit	1
17	FG-100606-0	通气管	Air drain	1
18	FG-100701-0	卡箍	Hoop O-ring	1
19	FG-100602-0	O 形圈	O-ring	1
20	Q/JR YP81-2000	螺钉 98512-06012	Screw 98512-06012	2
21	FG-100605-0	O 形圈	O-ring	1
22	Q/JR YP81-2000	螺钉 98512-06012	Screw 98512-06012	2
23	FG-100202-0	上气门盖	Upper valve cover	1
24	FG-100201-0	下气门盖	Lower valve cover	1
25	FG-100601-0	O 形圈	O-ring	2
26	GB/T70.1-2000	螺钉 M6*18	Screw M6*18	5
27	FG-110403-0	压板	Pressure plate	1
28	GB/T5783-2000	螺栓 M6*12	Bolt M6*12	2
29	FG-110402-0	止动板	Stop plate	1
30	D7RTC	火花塞	Spark plug	1

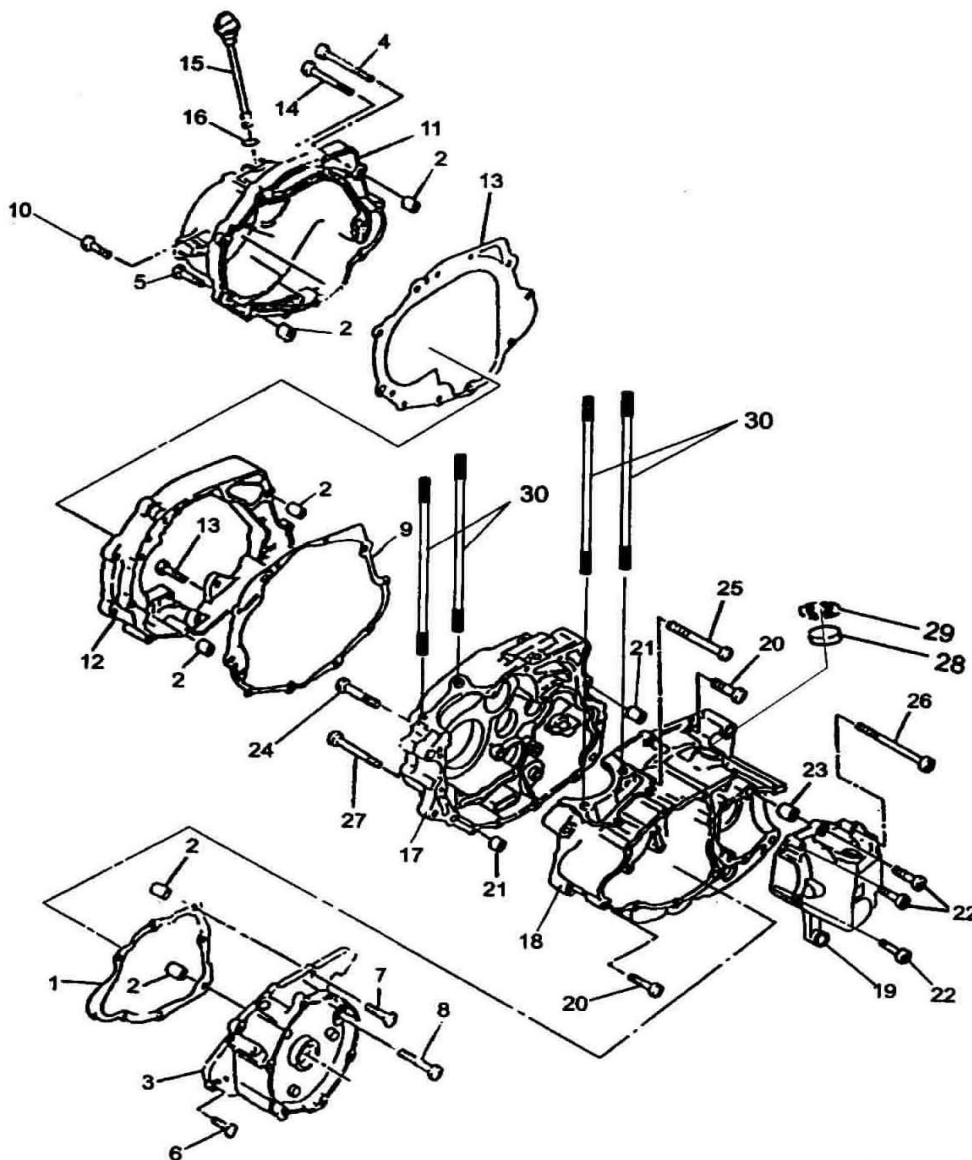


### 3、曲轴连杆总成 Crank connecting rod mechanism

1	FG-210000-0	曲轴连杆总成	Crank connecting rod assy	1
2	FG-220001-0	活塞环1	Piston ring 1	1
	FG-222002-0	活塞环2	Piston ring 2	1
	FG-221000-0	油环组件	Piston ring assy	1
3	GB/T819.1-2000	螺钉M6*18	Screw M6*18	3
4	FG-200401-0	压板	Pressure plate	1
5	GB/T276-1994	轴承6203	Bearing 6203	1
6	FG-202000-0	油封	Oil sear	1
7	FG-201000-0	汽缸体组合	Cylinder unit	1
8	GB/T70.1-2000	螺钉M6*25	Screw M6*25	2
9	GB/T1099-1979	半圆键3*5*13	Woodruff key 3*5*13	1
10	FG-220201-0	活塞	Piston	1
11	FG-200801-0	汽缸体垫片	Cylincer shim	1
12	Q/JR YP96-2000	定位销99510-14016	Alignment pin 99510-14016	2
13	FG-200601-0	O形圈	O-ring	1

14	FG-200001-0	活塞销	Piston pin	1
15	FG-200701-0	挡圈	Criclip	2
16	FG-200303-0	平衡轴驱动齿轮	Blance shaft driving gear	1
17	FG-200302-0	平衡轴齿轮	Balance shaft gear	1
18	FG-200301-0	平衡轴	Balance shaft	1
19	GB/T276-1994	轴承6304	Bearing 6304	2
20	FG-200003-0	平键	Flat key	1
21	FG-200402-0	锁紧垫圈	Locking washer	1
22	FG-200851-0	螺母	Nut	1
23	FG-200002-0	半圆键	Woodruff key	1
24	GB/T279-1994	轴承6306/C4	Bearing 6306/C4	1
25	GB/T894.1-1986	挡圈 26	Circlip 26	1

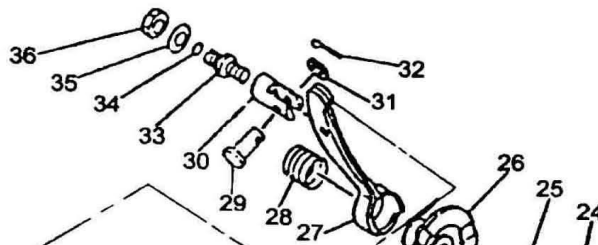
#### 4、箱体部分 Crankcase body part

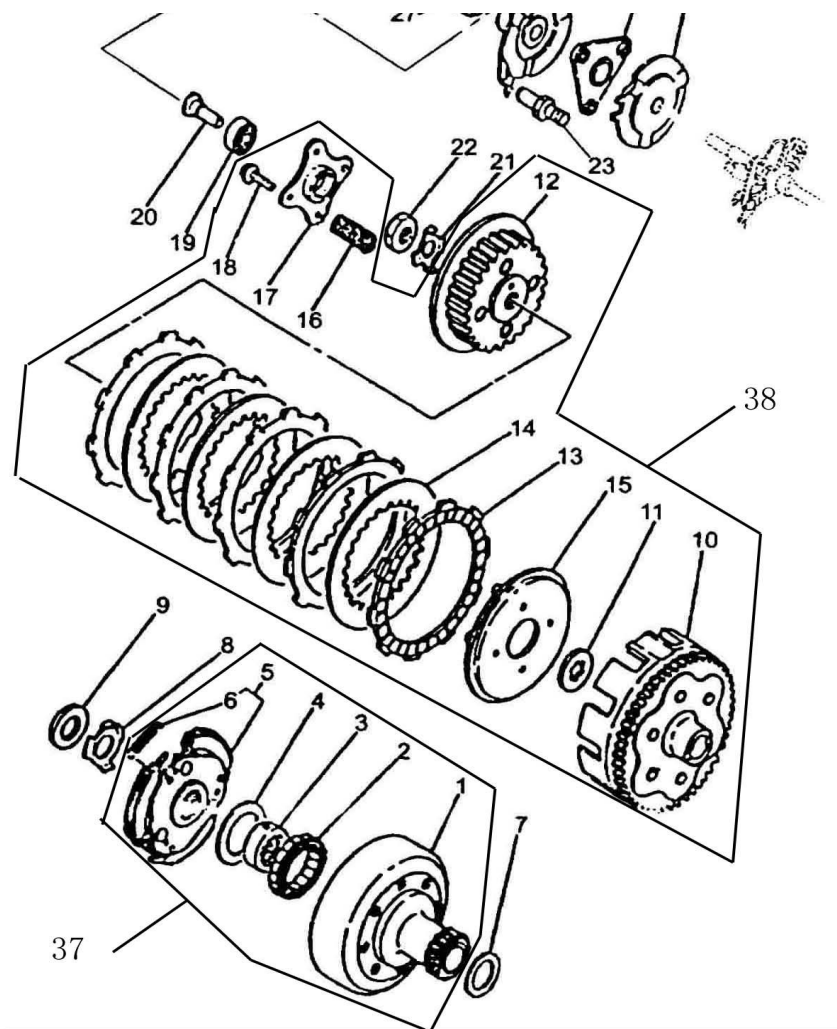


#### 4、箱体部份 Crankcase body part

1	FG-300801-0	左曲轴箱盖密封垫	Left crankcase cover gasket	1
2	Q/JR YP96-2000	销99530-12016	Alignment pin 99530-12016	8
3	FG-300201-0	左曲轴箱盖	Left crankcase cover	1
4	Q/JR YP81-2000	螺钉98512-06080	Screw 98512-06080	1
5	Q/JR YP81-2000	螺钉98512-06030	Screw 98512-06030	1
6	Q/JR YP81-2000	螺钉98512-06025	Screw 98512-06025	5
7	Q/JR YP81-2000	螺钉98512-06050	Screw 98512-06050	1
8	Q/JR YP81-2000	螺钉98512-06060	Screw 98512-06060	1
9	FG-300802-0	右连接箱密封垫	Right connecting case gasket	1
10	Q/JR YP81-2000	螺钉98512-06040	Screw 98512-06040	7
11	FG-340000-0	右曲轴箱盖	Right crankcase cover	1
12	FG-300202-0	右连接箱	Right connecting case	1
13	FG-300803-0	右曲轴箱盖密封垫	Right crankcase cover gasket	1
14	Q/JR YP81-2000	螺钉98512-06070	Screw 98512-06070	5
15	FG-301000-0	油尺	Oil dipstick	1
16	ZA1-300601-0	O形圈	O-ring	1
17	FG-320000-0	右曲轴箱总成	Right crankcase assy	1
18	F4-310000-0	左曲轴箱总成	Left crankcase assy	1
19	FG-300203-0	后传动盖	Rear driving cover	1
20	Q/JR YP81-2000	螺钉98512-06030	Screw 98512-06030	7
21	FA-300001-0	定位销 $\phi 10*14$	Alignment pin $\phi 10*14$	2
22	GB/T70.1-2000	螺钉M6*35	Screw M6*35	5
23	Q/JR YP96-2000	销99512-06060	pin 99510-06060	2
24	Q/JR YP81-2000	螺钉98512-06060	Screw 98512-06060	1
25	Q/JR YP81-2000	螺钉98512-06085	Screw 98512-06085	1
26	GB70.1-2000	螺钉M6*160	Screw M6*160	1
27	Q/JR YP81-2000	螺钉98512-06075	Screw 98512-06075	1
28	FG-302000-0	堵头	Sprue	1
29	GB/T893.1-1986	挡圈28	Circlip 28	1
30	FG-300851-0	双头螺栓	Double-head screw	4

#### 5、离合器 Clutch



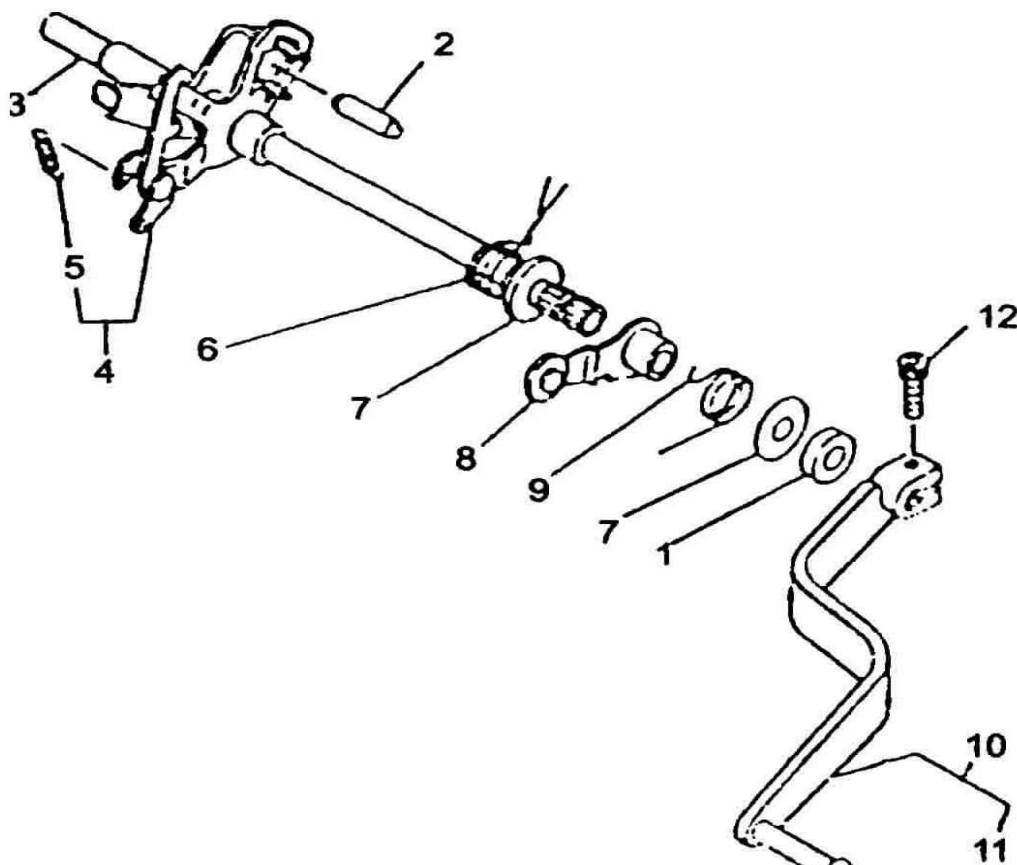


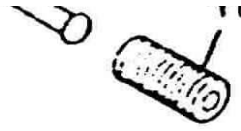
## 5、离合器 Clutch

1	FG-411000-0	主离合器罩总成	Main clutch case assy	1
2	FG-413000-0	超越离合器	Overreach clutch	1
3	FG-410001-0	内花键套	Inner spline cover	1
4	FG-410401-0	垫圈	washer	1
5	FG-414000-0	主离合器蹄块总成	Main clutch shoes assy	1
6	FG-414701-0	拉簧	Tension spring	3
7	FG-400402-0	垫圈	Washer	1
8	FG-400401-0	锁紧垫圈	Locking washer	1
9	FG-400854-0	螺母	Nut	1
10	FG-421000-0	离合器齿轮组合	Clutch gear unit	1
11	FG-420403-0	花键垫圈	Spline washer	1
12	FG-423000-0	离合器轮毂组合	Clutch gear unit	1
13	FG-422000-0	摩擦片	Friction plate	5
14	FG-420402-0	离合器片	Clutch plate	1
15	FG-420201-0	压盘	Pressure disc	1
16	FG-420701-0	离合器弹簧	Clutch spring	4
17	FG-420401-0	压盖	Pressure cover	1

18	FG-424000-0	带垫螺钉	Screw with washer	4
19	GB/T 276-1994	轴承6000	Bearing 6000	1
20	FG-400301-0	离合器顶杆	Clutch post rod	1
21	FG-400403-0	锁紧垫圈	Locking washer	1
22	FG-200851-0	螺母	Nut	1
23	FG-400001-0	导向杆	Guide rod	1
24	FG-400404-0	下凸轮板	Lower cam plate	1
25	FG-401000-0	钢球架组合	Steel ball bracket unit	1
26	FG-402000-0	上凸轮板组合	Upper cam plate unit	1
27	FG-403000-0	操纵摇臂组合	Operation rocker arm unit'	1
28	FG-400701-0	压簧	Compression spring	1
29	FG-400852-0	连接销	Connecting pin	1
30	FG-400002-0	支承座	Support seat	1
31	GB/T97.1-2000	垫圈 8	Washer 8	1
32	GB/T91-2000	开口销1.2*14	Cotter pin 1.2*14	1
33	FG-400853-0	调节螺钉	Adjusting screw	1
34	FG-400601-0	O形圈	O-ring	1
35	GB/T848-2000	垫圈 8	Wdasher 8	1
36	FG-400851-0	锁紧螺母	Locking nut	4
37	FG-410000-0	主离合器总成	Main clutch case assy	1
38	FG-420000-0	副离合器总成	Overreach clutch	1

6、传动、换档机构(换档操纵机构) Transmission and gear shift device (Gear shift operation device)

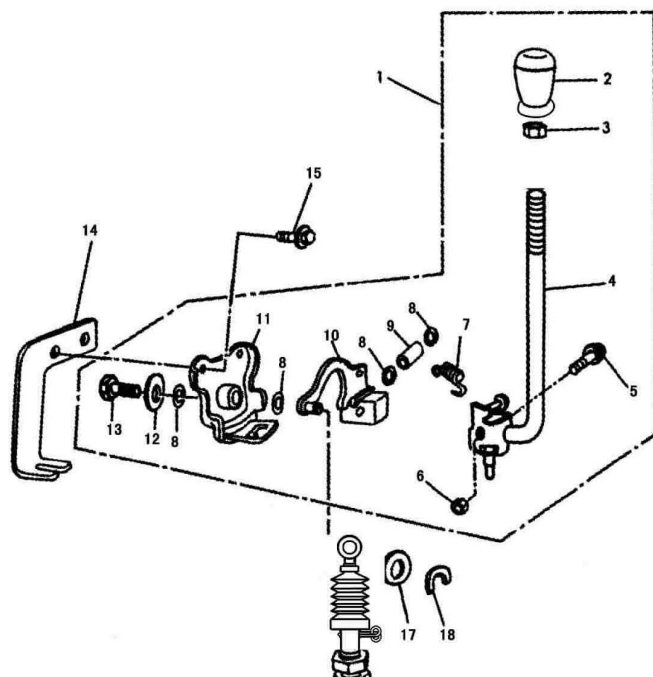


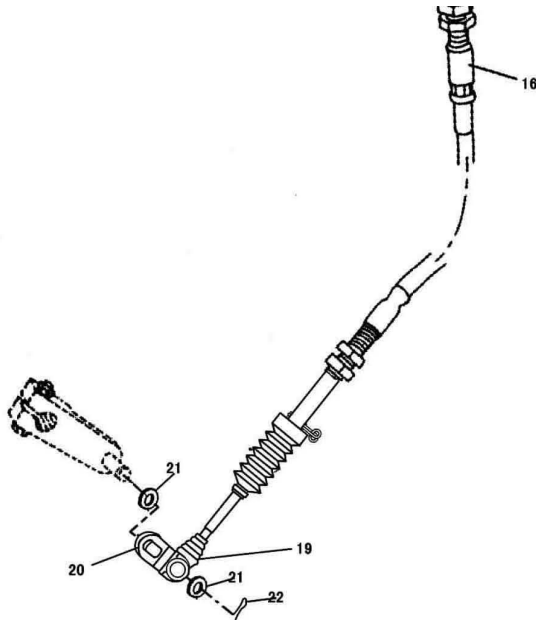


## 6、传动、换档机构（换档操纵机构） Transmission and gear shift device

1	ZA1-402000-0	油封	Oil seal	1
2	FG-500003-0	扭簧销	Torsion spring pin	1
3	FG-530000-0	换档轴总成	Shift axle assy	1
4	FG-550000-0	换档杆总成	Shift lever assy	1
5	FG-550701-0	拉簧	Tension spring	1
6	FG-500701-0	换档扭簧	Shift torsion spring	1
7	FG-500402-0	垫圈	Washer	2
8	FG-560000-0	限位杠杆总成	Limit lever assy	1
9	FG-500702-0	限位扭簧	Limit torsion spring	1
10	FG-570000-0	换档踏板总成	Shift pedal assy	1
11	JS150.00-165	变速踏板杆套	Transmission pedal lever sleeve	1
12	GB/T5782-86	螺钉M6*20	Screw M6*20	1

## 7、倒档手柄机构 Reverse lever device



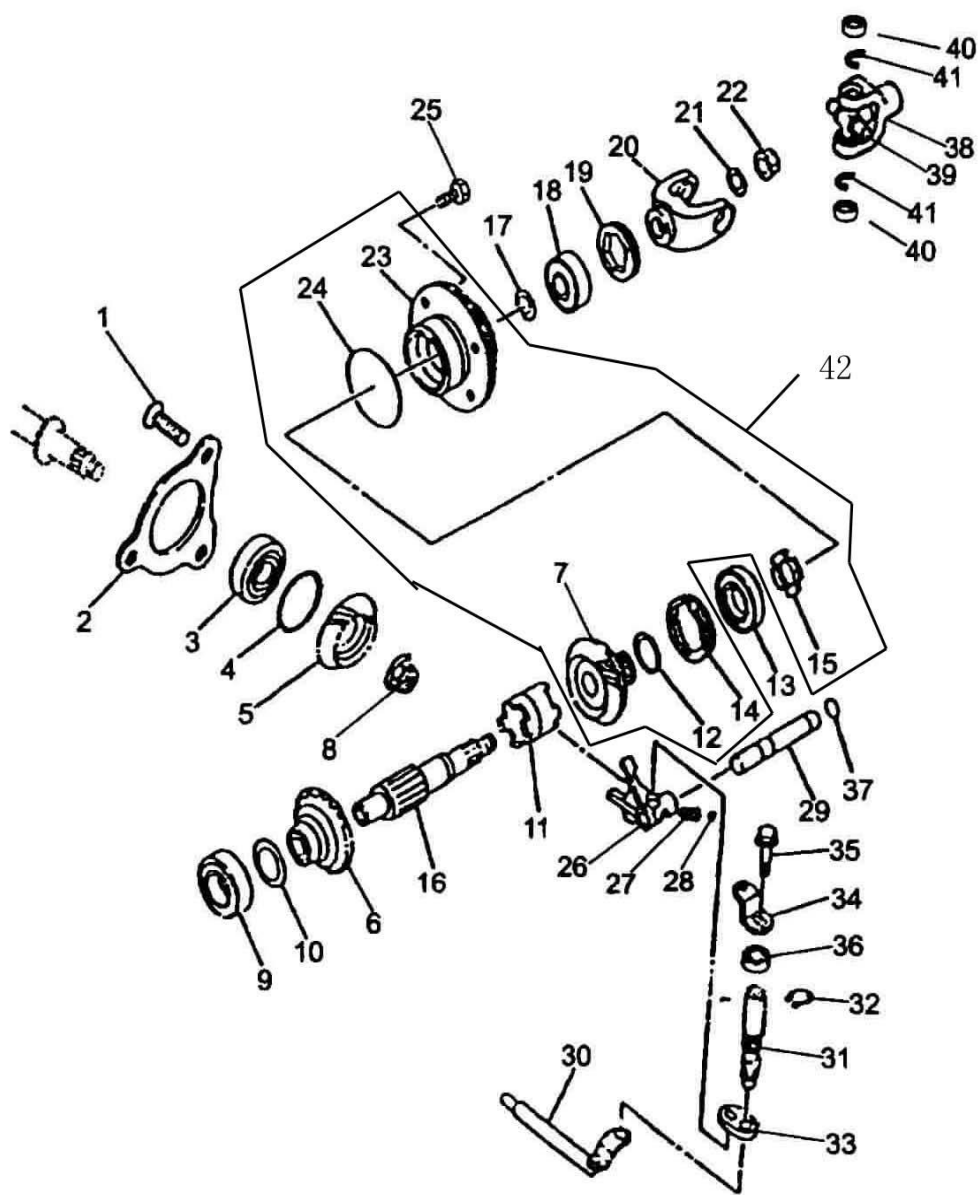


- 18 -

## 7、倒档手柄机构 Reverse lever device

1	SSM4-360000-0	换挡转换操纵机构	Transforming control mechanism for reverse lever	1
2	SSM4-360602-0	手柄	Handle lever	1
3	GB/T6172-1986	螺母M12	Nut M12	1
4	SSM4-362000-0	操纵杆组合	Control rod unit	1
5	GB/T16674-1996	螺栓M6*35	Bolt M6*35	1
6	GB/T6177-1986	螺母M6	Nut M6	1
7	SSC4-360701-0	拉簧	Tension spring	1
8	GB/T3452.1-1992	O形圈12*2.5	O*ring 12*2.5	4
9	SSC4-360001-0	衬套	Bushing	1
10	SSM4-363000-0	转臂组合	Swaying arm unit	1
11	SSM4-364000-0	安装支承组合	Attachment bracket unit	1
12	GB/T96-1985	垫圈6-140HV	Washer 6	2
13	GB/T16674-1996	螺栓M6*16	Bolt M6*16	2
14	SSM0-000401-0	倒挡拉索上固定支承	Upper locking board of reverse c	1
16	SSM4-280000-0	倒档拉索组合	Reverse cable assy	1
17	GB/I97.1-2002	垫圈 8	Washer 8	1
18	GB/T896-1986	挡圈 6	Retaining ring 6	1
19	FG-590604-0	后护套	Back protecting cover	1
20	F15-500401-2	倒挡拉杆板	Reverse tension rod	1
21	GB/T97.1-85	垫圈 6	Washer 6	2
22	GB/T91-1986	销1.4*4	Pin 1.6*4	1

## 8、传动、换挡机构(输出机构) Transmission and gear shift device (Output device)



**8、传动、换挡机构（输出机构） Transmission and gear shift device(output device)**

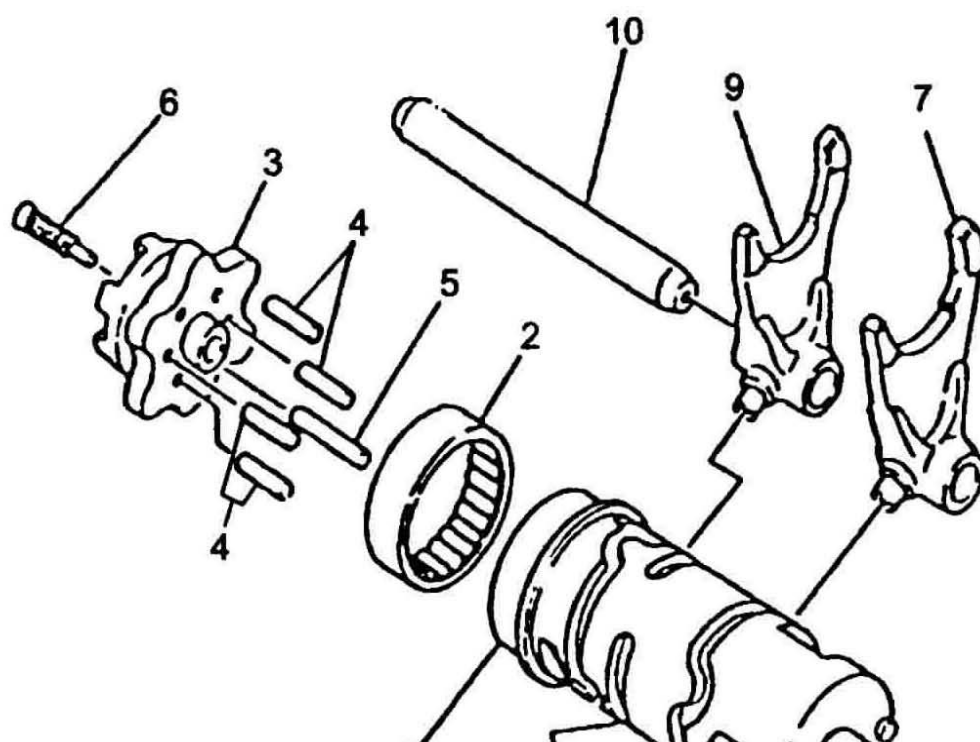
1	GB/T819.1-2000	螺栓 M8*25		3
2	FG-500401-0	压板	Pressure plate	1
3	GB/T276-94	轴承6304	Bearing 6304	1
4	FG-500408-0	垫圈	Washer	1
	FG-500407-0			1
	FG-500406-0			1

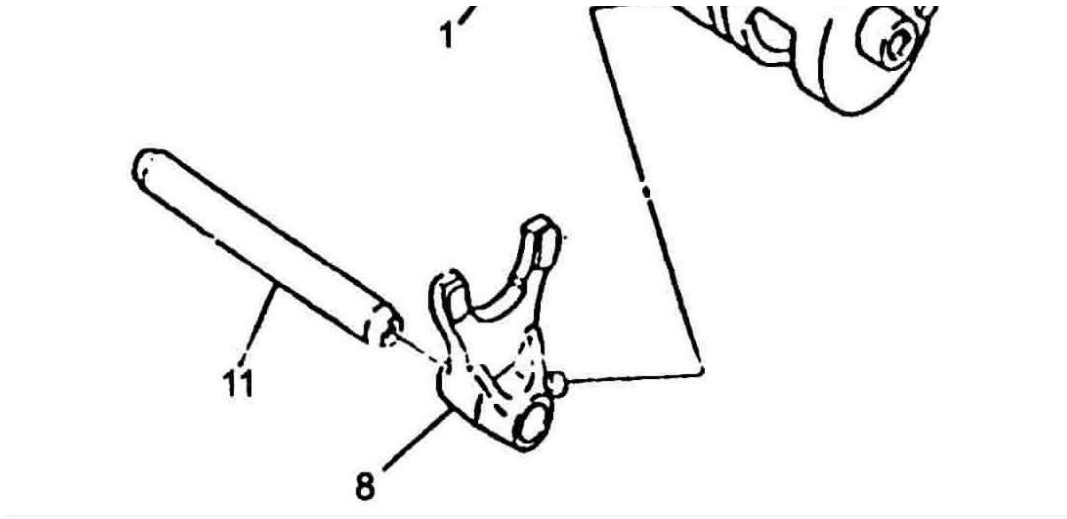
	FG-500409-0			1
5	FG-500304-0	输出齿轮	Final gear	1
6	FG-581000-0	正档齿轮组合	Forward gear unit	1
7	FG-583301-0	倒档齿轮	Reverse gear	1
8	FG-500851-0	螺母	Nut	1
9	GB/T276-1994	轴承6006	Bearing 6006	1
10	FG-580407-0	垫圈	Washer	1
	FG-580406-0			1
	FG-580405-0			1
	FG-580408-0			1
11	FG-580302-0	连接爪	Connecting paw	1
12	FG-580404-0	垫圈	Washer	1
	FG-580403-0			1
	FG-580402-0			1
	FG-580401-0			1
13	FG-584000-0	轴承	Bearing	1
14	FG-583851-0	螺套		1
15	FG-583852-0	异形左旋螺母		1
16	FG-580301-0	输出轴	Output shaft	1
17	FG-580404-0	垫圈	Washer	1
	FG-580403-0			1
	FG-580409-0			1
	FG-580410-0			1
	FG-580411-0			1
18	FG-585000-0	轴承	Bearing	1
19	FG-580851-0	内六角螺套	Internal hexagonal nut	1
20	FG-580303-0	前接头	Front connecting fork	1
21	FG-580401-0	垫圈	Washer	1
22	FG-580852-0	螺母	Nut	1
23	FG-583201-0	后盖	Rear cover	4
24	FG-583601-0	O形圈	O-ring	1
25	GB/T16674-1996	螺栓 M8*25	Bolt M8*25	1
26	FG-500305-0	倒档拨叉	Reverse shift fork	1
27	FG-500703-0	压簧	Compression spring	1
28	GB/T308-2002	钢球 6.35G100B	Steel ball 6.35G100B	1
29	FG-500006-0	倒档拨叉轴	Reverse shift fork shaft	1
30	F4-504000-0	倒档控制杆组合	Reverse control lever unit	1
31	FG-500007-0	倒档操纵轴	Reverse control shaft	1
32	GB/T894.1-1986	挡圈 14	Circlip 14	1
33	FG-500403-0	操纵板	Operation plate	1
34	FG-590404-0	杠杆板	Lever plate	1
35	GB/T5789-1986	螺栓M6*16	Bolt M6*16	1
36	FG-505000-0	油封	Oil seal	1
37	FG-500601-0	O形圈	O-ring	1
38	FG-580304-0	后接头	Rear joint	1
39	FG-580305-0	传动叉	Driving fork	1
40	FG-586000-0	滚针轴承	Rolling bearing	4



2	FG-510304-0	五档主动齿轮	Shift 5 driving gear	1
3	FG-510401-0	花键垫片	Spline pad	1
4	FG-510402-0	弹性挡圈	Circlip	1
5	FG-510302-0	三档主动齿轮	Shift 3 driving gear	1
6	FG-510303-0	四档主动齿轮	Shift 4 driving gear	1
7	FG-510301-0	二档主动齿轮	Shift 2 driving gear	1
8	GB/T276-94	轴承6204	Bearing 6204	1
9	FG-501000-0	油封	Oil seal	1
10	GB/T276-94	轴承6202	Bearing 6202	2
11	FG-521000-0	驱动轴组合	Drive axle unit	1
12	FG-520301-0	二档从动齿轮	Shift 2 driven gear	1
13	FG-520303-0	四档从动齿轮	Shift 4 driven gear	1
14	FG-520302-0	三档从动齿轮	Shift 3 driven gear	1
15	FG-520304-0	五档从动齿轮	Shift 5 driven gear	1
16	FG-520402-0	内花键垫圈	Inner spline washer	1
17	FG-520401-0	弹性挡圈	Circlip	1
18	FG-522000-0	一档从动齿轮组合	Shift 1 driven gear unit	1
19	FG-520403-0	内花键垫圈	Inner spline washer	1
20	GB/T894.1-86	挡圈26	Circlip 26	1
21	FG-520404-0	垫圈	Washer	1
22	FG-510000-0	主轴总成	Spindle unit assy	1
23	FG-520000-0	驱动轴总成	Drive axle unit assy	1

10、传动、换档机构(换档凸轮、拨叉机构) Transmission, shift device (Shift cam, shift fork device)

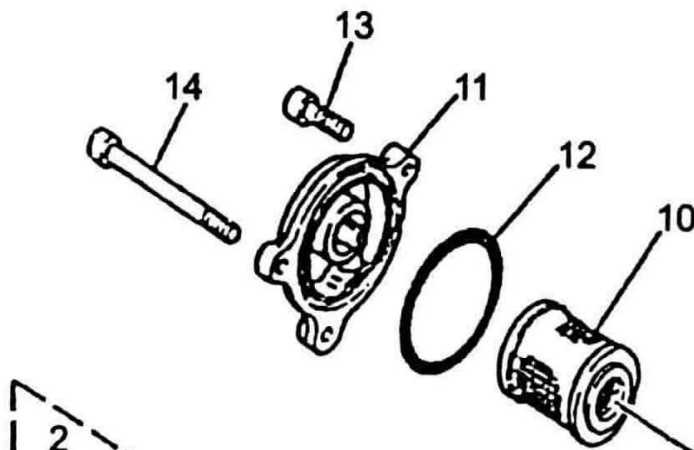


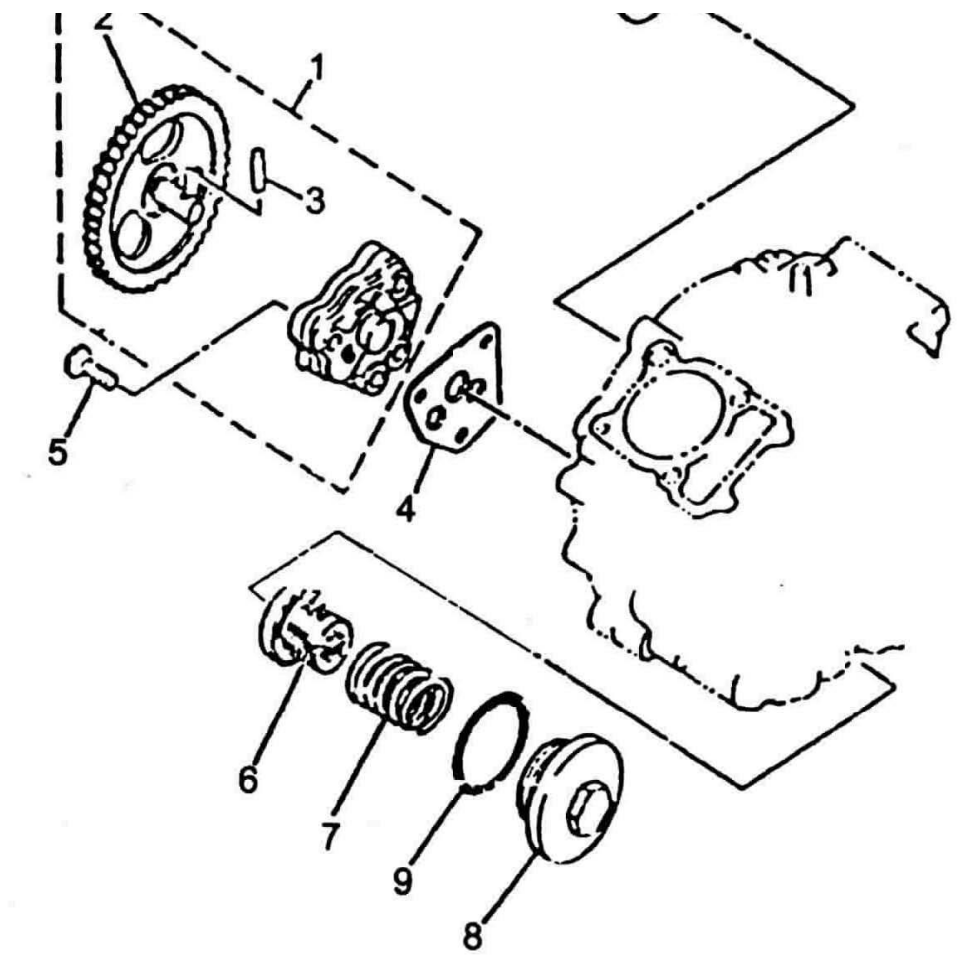


10、传动、换挡机构（换挡凸轮、拨叉机构） Transmission,shift device(Shift cam,shift fork

1	F4-540000-0	换挡凸轮轴总成	Shift cam axle assy	1
2	FG-502000-0	滚针轴承	Needle bearing	1
3	FG-500751-0	星形轮	Star-gear	1
4	FG-500004-0	换挡销	Shift pin	4
5	FG-500005-0	星形轮定位销	Position pin of star-gear	1
6	GB/T819.1-2000	螺钉 M6*35	Screw M6*35	1
7	FG-500302-0	拨叉2	Shift fork 2	1
8	FG-500303-0	拨叉3	Shift fork 3	1
9	FG-500301-0	拨叉1	Shift fork 1	1
10	FG-500001-0	长拨叉轴	Long shift fork axle	1
11	FG-500002-0	短拨叉轴	Short shift fork axle	1

11、润滑系统 Lubrication system



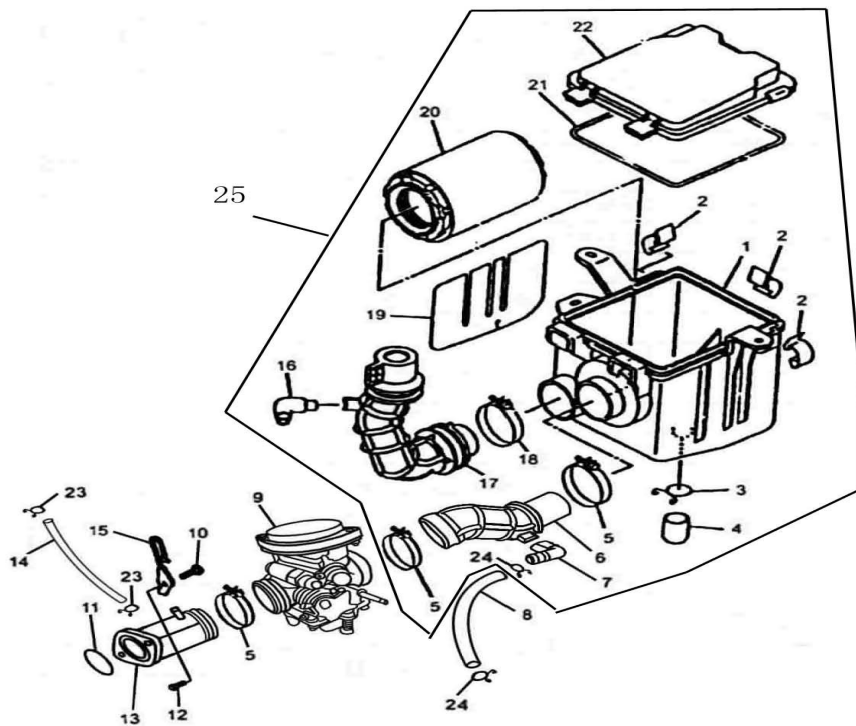


- 28 -

## 11、润滑系统 Lubrication system

1	FG-610000-0	机油泵	Engine oil pump	1
2	FG-611000-0	油泵齿轮组合	Oil pump gear unit	1
3	FG-610001-0	传动销	Transmission pin	1
4	FG-600801-0	油泵垫片	Oil pump pad	1
5	GB/T819.1-2000	螺钉 M6*30	Scrtew M6*30	3
6	FG-620000-0	机油粗滤器	Engine oil coarse strainer	1
7	FG-600701-0	压簧	Compression spring	1
8	FG-600201-0	放油螺塞	Oil drain plug screw	1
9	FG-600601-0	O形圈 (34x3.5)	O-ring (34x3.5)	1
10	FG-630000-0	机油精滤器	Engine oil fine strainer	2
11	FG-600202-0	机油精滤器盖	Engine oil fine strainer cover	1
12	FG-600602-0	O形圈	O-ring	1
13	GB/T70.1-2000	螺钉 M6*20	Screw M6*20	2
14	GB/T70.1-2000	螺钉 M6*115	Screw M6*115	1

## 38.进排气系统 (进气系统) (II) Intake & exhaust system (Intake system)

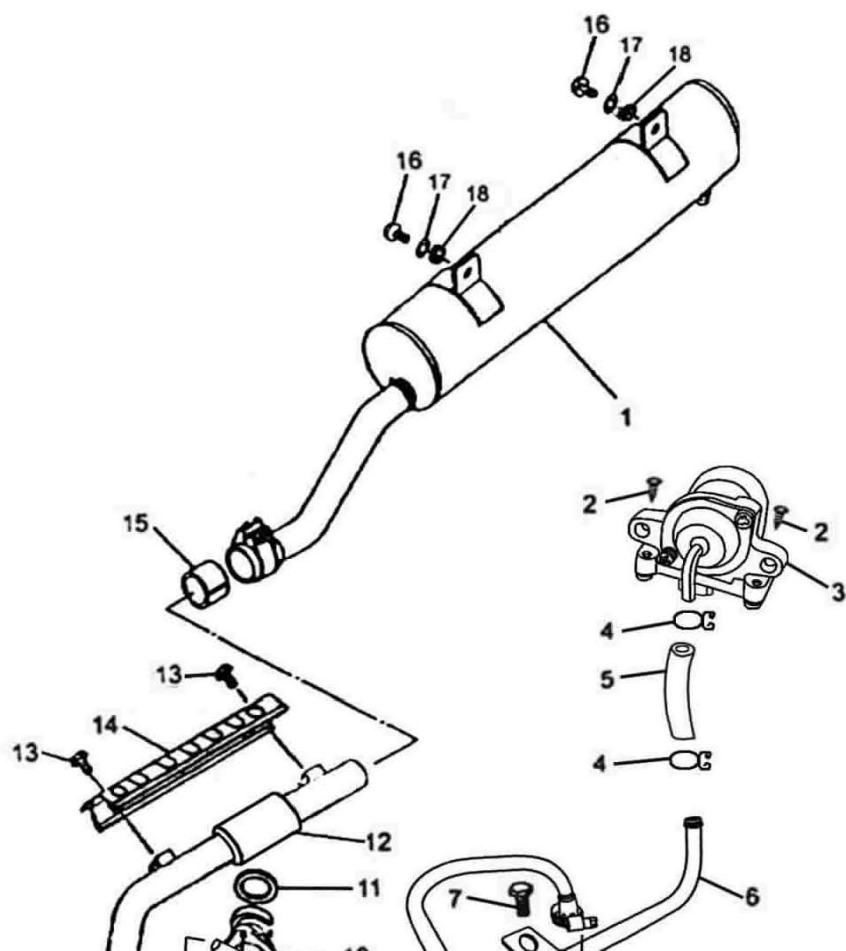


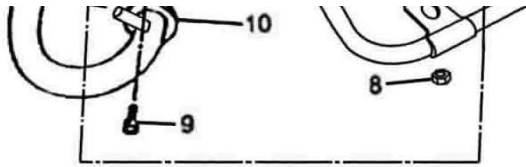
## 12、进排气系统（进气系统）Intake system

1	FG-710503-0	空滤器体	Air filter body	1
2	FG-710401-0	空滤器盖锁片	Air filter cover lock	3
3	FG-710701-0	钢丝夹	Steel clip	1
4	FG-710504-0	集尘杯	dust cup	1
5	F15-702000-0	管夹组合	Pipe clamp unit	1
6	F15-710601-0	化油器连接管	Connecting pipe of carburetor	1
7	FG-710501-0	进气管弯头	Intake pipe bend	1
8	F15-700603-0	气管1	Pipe 1	1
9	F15-720000-0	化油器	Carburetor assy	1

10	GB5782-86	螺钉M6*16	Screw M6*16	2
11	F15-700601-0	O形圈	O-ring	1
12	GB70-85	螺钉M6*16	Screw M6*16	2
13	F15-701000-0	化油器座组合	Carburetor seat unit	1
14	F15-700602-0	负压管	Negative pressure pipe	1
15	FG-704000-0	钩组合	Cable clip unit	1
16	FG-710501-0	进气管弯头	Intake pipe bend	1
17	FG-710601-0	进气管	Intake pipe	1
18	FG-712000-0	进气管管夹组合	Intake pipe clamp unit	1
19	FG-710801-0	隔热垫	Thermal pad	1
20	FG-711000-0	滤芯组合	Filter core unit	1
21	FG-710603-0	密封圈	Seal ring	1
22	FG-710502-0	空滤器盖	Air filter cover	1
23	F15-700701-0	钢丝夹 1	Steel clip 1	2
24	F15-700703-0	钢丝夹 3	Steel clip 3	2
25	F15-710000-0	空滤器总成	Air filter assy	1

39. 进排气系统 (排气系统) (II) Intake & exhaust system (Exhaust system)

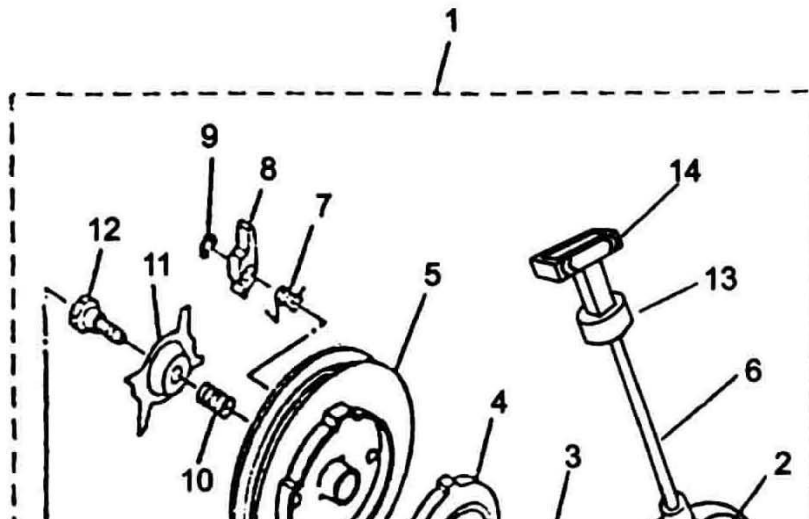


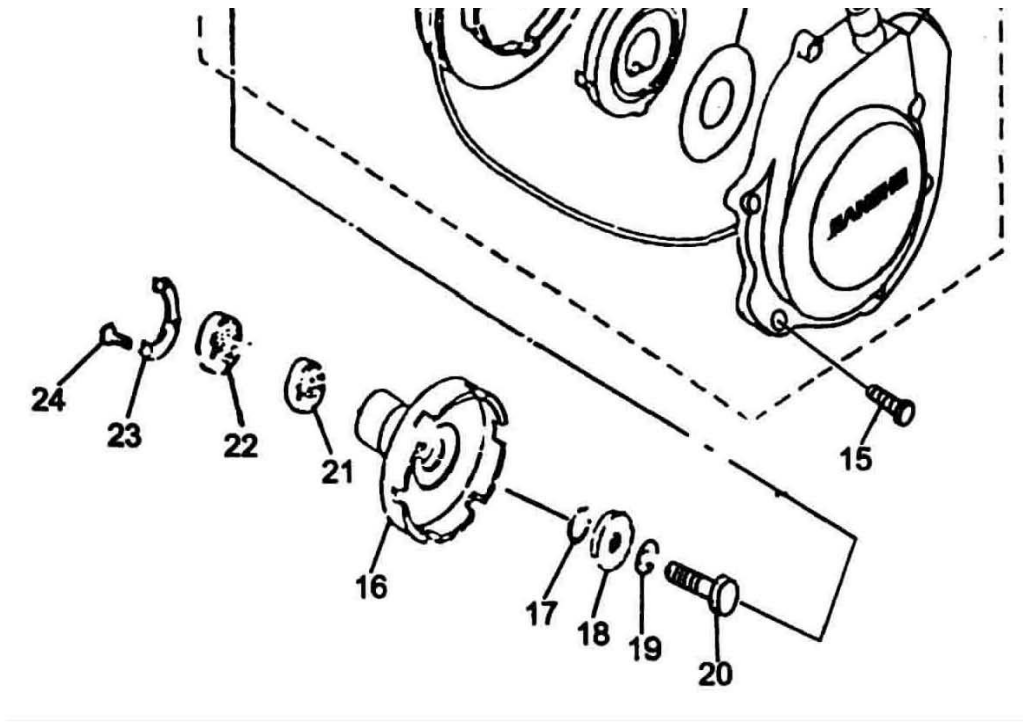


### 13、进排气系统（排气系统）(Exhaust system)

1	FG-750000-0	消声器组件	Silencer assy	1
2	GB/T5787-86	螺栓M6*16	Bolt M6*16	2
3	F15-760000-0	补气阀	Add air valve	1
4	F15-702000-0	管夹组合	Steel clip 2	2
5	F15-700604-0	气管2	Pipe 2	1
6	F15-703000-0	补气管组合	Add air pipe unit	1
7	GB/T5787-86	螺栓M6*12	Bolt M6*12	1
8	GB/T6187-86	螺母M6	Nut M6	1
9	GB/T70.1-2000	螺钉M6*20	Screw M6*20	2
10	FG-741402-0	排气管连接板	Connecting plate of exhaust pipe	1
11	FG-703000-0	排气管垫圈	Exhaust pipe washer	1
12	F15-740000-0	排气管总成	Exhaust pipe unit	1
13	GB/T5789-1986	螺栓 M6*10	Bolt M6*10	2
14	FG-742000-0	排气管隔热板组合	Thermal plate unit of exhaust pipe	1
15	FG-750801-0	排气管密封垫	Seal ring of exhaust pipe	1
16	GB/T5783-2000	螺栓 M8*20	Bolt M8*20	2
17	GB/T97.1-2002	垫圈8	Washer 8	2
18	GB/T93-1987	垫圈8	Washer 8	2

### 14、起动系统(手起动) Starting system (Hand starting)



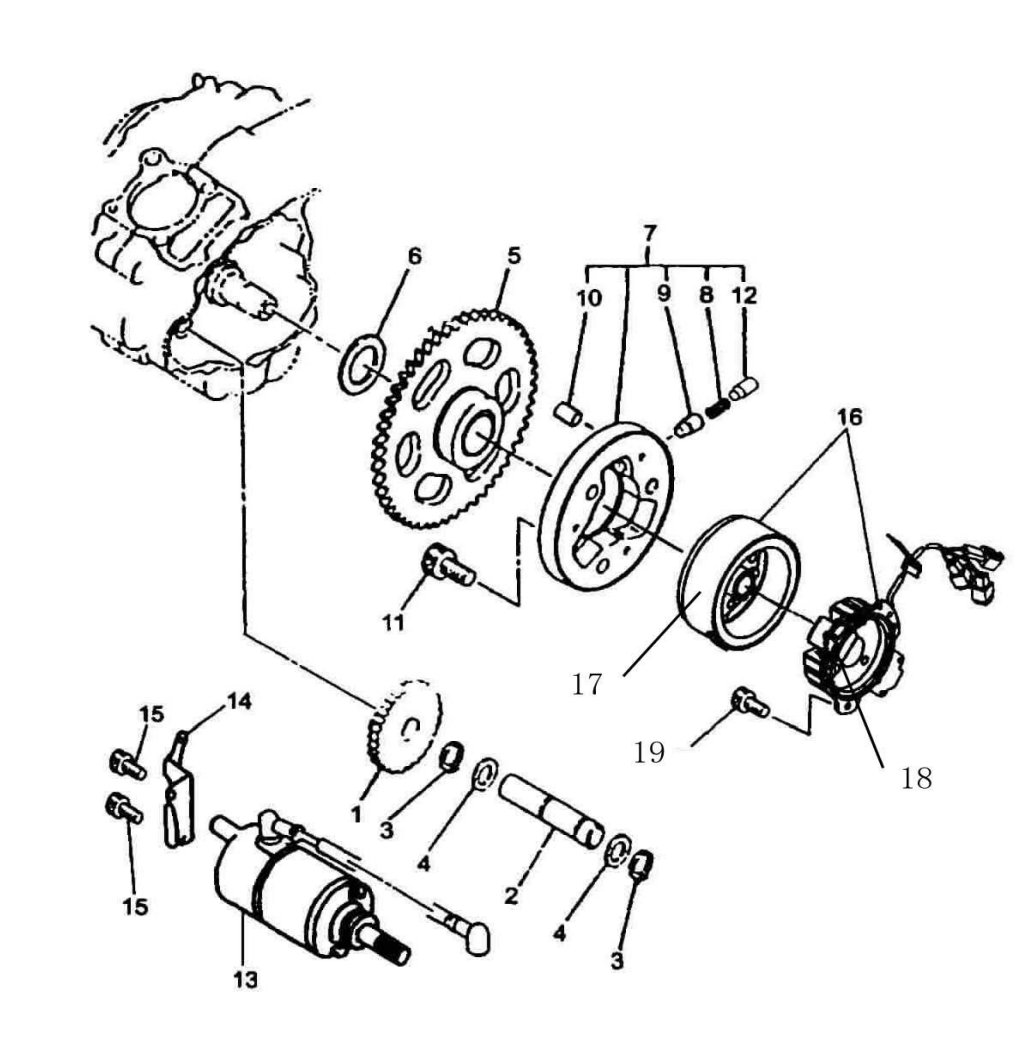


#### 14、 起动系统(手起动) Starting system (Hand starting)

1	FG-870000-0	手操起动机构	Hand starting device	1
2	FG-872000-0	左侧盖组合	Left side cover unit	1
3	FG-870801-0	垫片	Shim	1
4	FG-873000-0	卷簧底板组合	Bottom board unit of winding spring	1
5	FG-871000-0	驱动盘组合	Drive plate unit	1
6	FG-870802-0	拉线	Tension line	1
7	FG-870702-0	扭簧	Torsion spring	2
8	FG-870851-0	驱动爪	Drive paw	2
9	GB/T896-1986	挡圈6	Circlip 6	2
10	FG-870701-0	压簧	Compressing spring	1
11	FG-870401-0	导向板	Guide board	1
12	FG-870001-0	螺钉销	Screw pin	1
13	FG-870601-0	起动手柄	Starting lever	1
14	FG-870402-0	起动手柄盖	Screw lever cover	1
15	Q/JRYP81-2000	螺钉 98512-06020	Screw 98512-06020	6
16	FG-807000-0	起动棘轮组合	Boss one-way unit	1
17	FG-800601-0	O形圈	O-ring	1
18	FG-800404-0	垫圈	Washer	1
19	GB/T93-1987	垫圈10	washer	1
20	GB/T5785-2000	螺栓M10*1.25*40	Bolt M10*1.25*40	1

21	FG-806000-0	油封	Oil seal	1
22	FG-584000-0	轴承	Bearing	1
23	FG-800403-0	压板	Pressing plate	1
24	Q/JRYP81-2000	螺钉 M5*16	Screw M5*16	3

### 15、起动系统(电起动) Starting system (Electric starter)

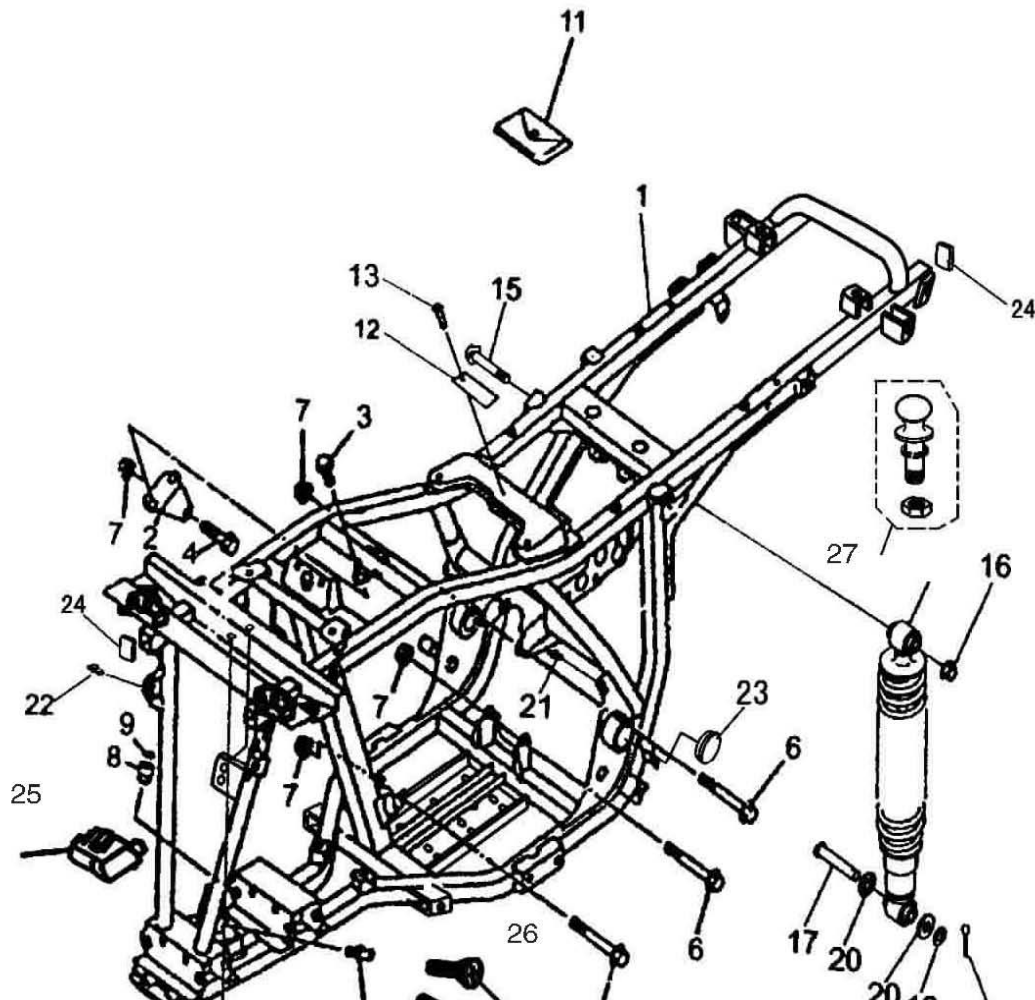


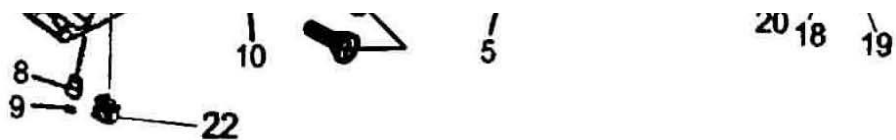
### 15、起动系统(电起动) Starting system (Electric starter)

1	FG-800751-0	双连过轮	Duplux go gear	1
2	FG-800001-0	过轮轴	Gogear axle	1
3	FG-800401-0	垫圈	Washer	2

4	GB/T8941.1-1988	挡圈12	Circlip 12	2
5	FG-860000-0	电起动齿轮组合	Gear unit of electric starter	1
6	FG-800402-0	垫圈	washer	1
7	FG-830000-0	电起动离合器	Clutch of electric starter	1
8	FG-830701-0	压簧	Compression spring	3
9	FG-830003-0	弹簧盖	Spring cover	3
10	FG-830004-0	滚柱	Pin roller	3
11	GB/T70.1-2000	螺钉 M8*16	Screw M8*16	3
12	FG-830002-0	弹簧座	Spring seat	3
13	FG-850000-0	起动电机	Starting motor	1
14	FG-800405-0	起动电机连接板	Connecting board of starting mot	1
15	Q/JR YP2-2000	螺钉 97602-06115	Screw 97602-06115	2
16	F15-840000-F2	磁电机	Magneto	1
17	FG-841000-0	转子	Rotor	1
18	F15-842000-F2	定子	Stator	1
19	Q/JR YP2-2000	螺钉 97062-06215	Screw 97062-06215	3

#### 41、车架、后减震器 ( II ) Frame, rear shock absorber

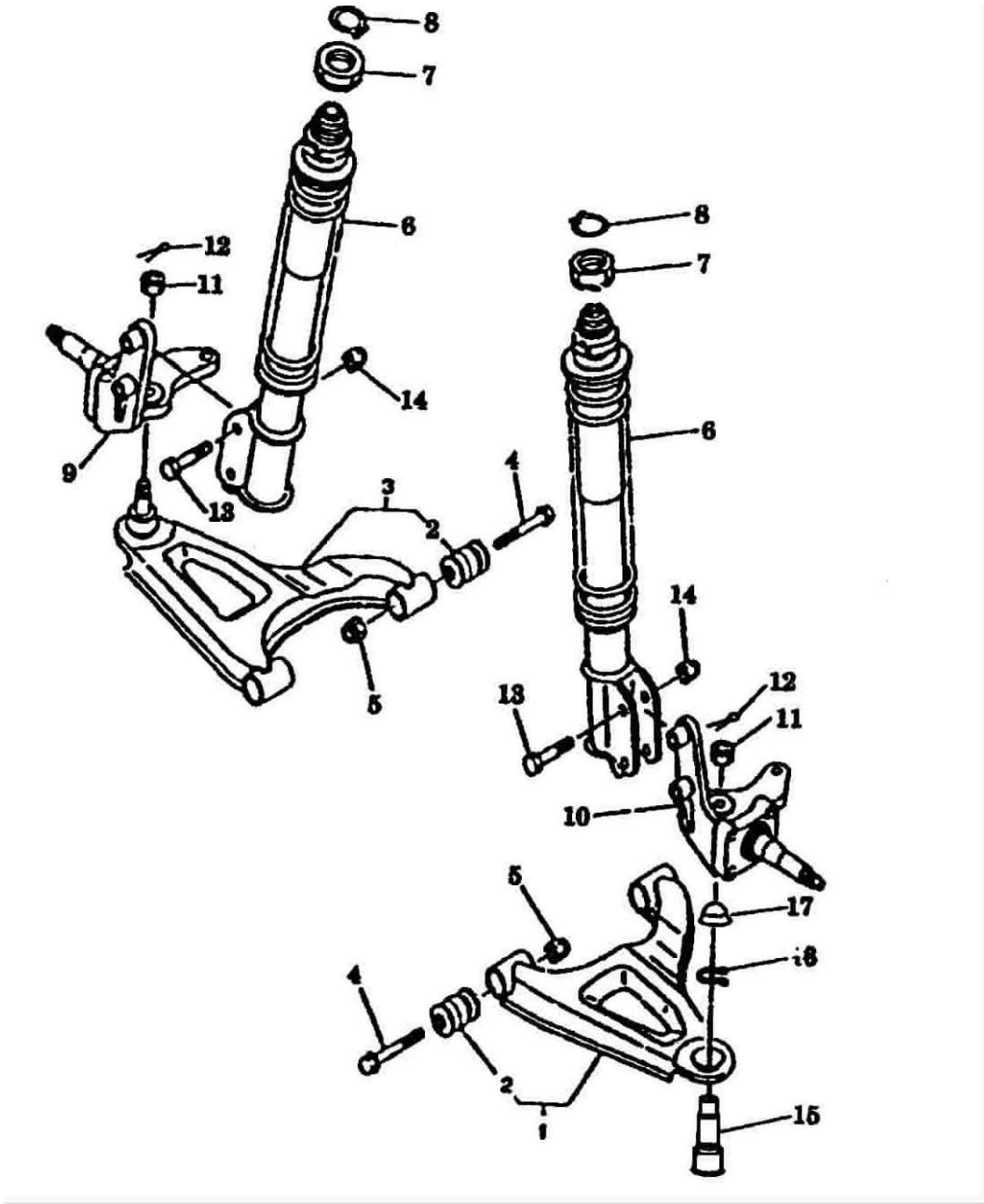




**16、车架、后减震器 Frame, rear shock absorber**

1	SSM3-100000-0	车架	Frame	1
2	SSA0-004000-0	发动机上连接板组合	Connection plate combination on engine	1
3	GB/T16674-1996	螺栓M8*16	Bolt M8*16	2
4	GB/T16674-1996	螺栓M8*55	Bolt M8*55	1
5	GB/T16674-1996	螺栓M8*65	Bolt M8*65	1
6	GB/T16674-1996	螺栓M8*105	Bolt M8*105	2
7	GB/T6187.1-2000	螺母M8	Nut M8	4
8	SSA0-008701-0	轴承	Bearing	2
9	GB3452.1-1992	O形密封圈15*2.65G	O-ring 15*2.65G	2
10	JB/T7940.1-1992	油杯M6	Oil cup M6	1
11	SSA9-000000-0	随车工具	Tool kit	1
12	SSM0-000402-0	标牌	Label	1
13	GB/T2618-1990	抽芯铆钉 3.2*7	Core-drawing rivet 3.2*7	2
14	SSA3-530000-0	后减震器	Rear shock absorber	1
15	GB/T16674-1996	螺栓 M12*75	Bolt M12*75	1
16	GB/T6187.1-2000	螺母 M12	Nut M12	1
17	SSA0-000010-0	后减震销轴	Rear shock absorber pin	1
18	GB/T97.1-2002	垫圈12	Washer 12	1
19	GB/T91-2000	开口销3.2*24	Split pin 3.2*24	1
20	SSA0-011000-0	后减震胶垫组合	Rear shock absorbing rubber pad unit	2
21	SSA0-000512-0	线夹4	Cable clip 4	1
22	SSA0-000510-0	线夹2	Cable clip 2	1
23	SSA0-000506-0	后臂轴防尘盖	Rear arm dust-proof cover	2
24	SSC3-100601-0	车架方塞	Square plug of frame	4
25	SSA4-410000-2	转向锁	Steering lock	1
26	GB819-86	螺钉M5*12	Screw M5*12	2
27	SSA0-004000-2	拖车连接销组合	Trailer joint pin unit	1

**17、前悬挂系统 Front suspension system**

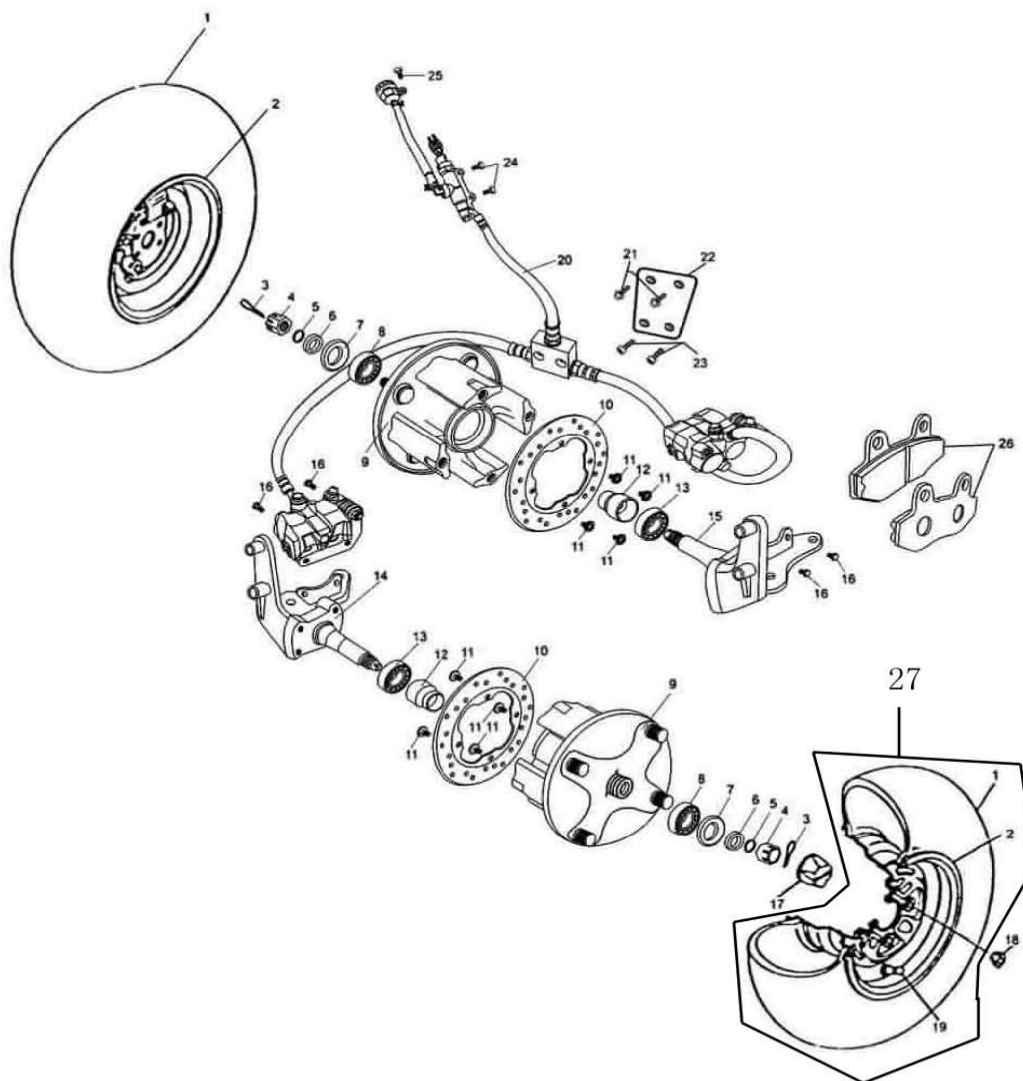


**17、前悬挂系统 Front suspension system**

1	SSA3-211000-0	左前轮叉焊接	Front left wheel fork weld	1
2	SSA3-212000-0	衬套组件	Bushing unit	4
3	SSA3-221000-0	右前轮叉焊接	Front right wheel fork weld	1
4	GB/T16674-1996	螺栓M10*70	Bolt M10*70	4
5	GB/T6187.1-2000	螺母 M10	Nut M10	4
6	SSA3-510000-0	前减震器	Front shock absorber	2
7	SSA0-000302-0	前减震器螺母	Front shock absorber nut	2
8	GB/T894.2-1986	挡圈32	Circlip 32	4
9	SSB4-313000-0	右前座组合	Front right seat unit	1

10	SSB4-314000-0	左前座组合	Front left seat unit	1
11	GB/T9458-1988	螺母M12*1.25	Nut M12*1.25	2
12	GB/T91-2000	开口销 3.2*24	Cotter pin 3.2*24	2
13	GB/T5782-2000	螺栓 M12*50	Bolt M12*50	4
14	GB/T6184-2000	螺母 M12	Nut M12	4
15	SSA3-213000-0	前叉球连接	Front wheel fork ball joint	2
16	SSA0-007000-0	前叉球连接防尘套	Dust-proof bush of front fork ball joint	2

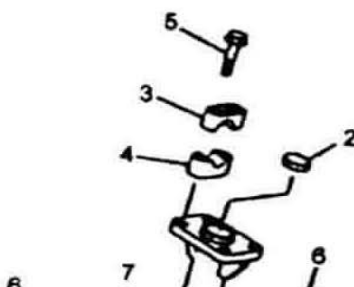
#### 40. 前轮及前制动系统 ( II ) Front wheel and front brake system

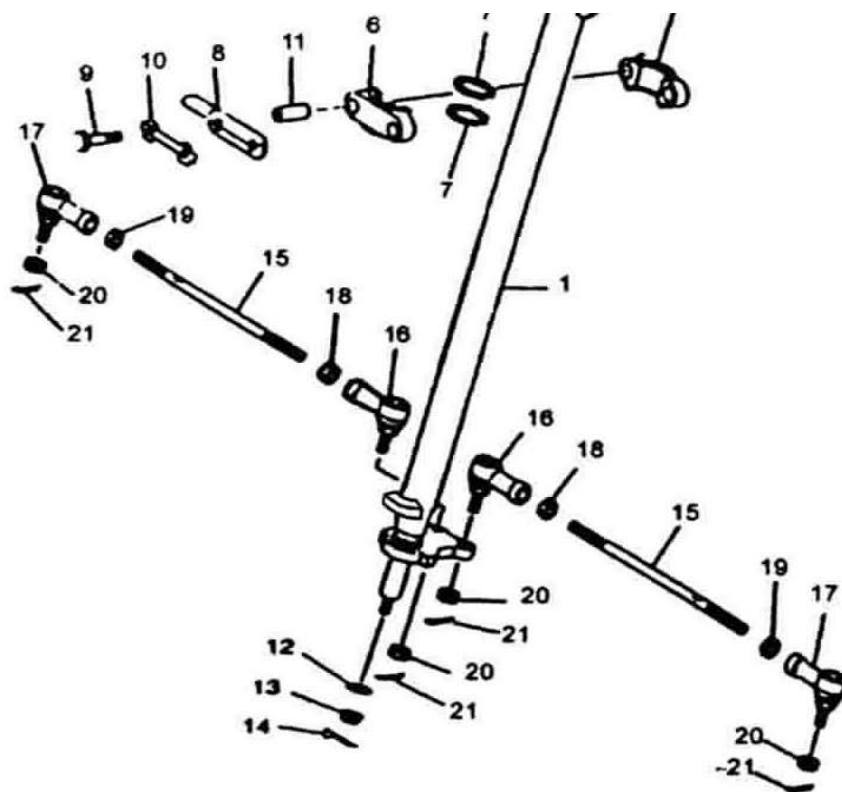


## 18、前轮系统 Front wheel system

1	SSA3-810601-0	前轮胎	Front tire (left)	2
2	SSA3-811000-0	前轮辋	Front rim (left)	2
3	GB/T91-2000	开口销3.2*26	Cotter pin 3.2*26	2
4	GB6181-1986	螺母M14	Nut M14	2
5	GB/T3452.1-1992	O形圈17*1.8G	O-ring 17*1.8G	2
6	SSA4-310002-0	衬圈	Bushing pipe	2
7	SSA4-317000-0	油封	Oil seal	2
8	GB/T 276-1994	轴承6203	Bearing 6203	2
9	SSA4-312000-0	前制动基座组合	Base seat assy of front brake	2
10	SSB4-311401-0	制动盘	Brake disc	2
11	SSB4-310001-0	制动盘安装螺钉M8	Installing screw of brake disc	8
12	SSA4-310702-0	衬管	Bushing pipe	2
13	GB/T 276-1994	轴承6005-RS	Bearing 6005-RS	2
14	SSB4-314000-0	左安装座	Left installing seat	1
15	SSB4-313000-0	右安装座	Right installing seat	1
16	GB/T 16674-1996	螺栓M8X12	Bolt M8X12	4
17	SSA0-000604-0	前后轮防尘盖	Dust-proof cover of wheels	4
18	SSA0-000301-0	前后轮连接螺母	Connecting nut of front and rear	8
19	GB12836.1-1999	无内胎气门嘴Z2-01-1	Air drain mouth without tube Z2	2
20	SSA4-311000-2	前液压制动器总成	Front hudraulic brake	1
21	GB5787-86	螺栓M5X16	Bolt M5*16	1
22	SSB0-001000-0	分液阀安装板组合	Liquid distribution valve installin	1
23	GB/T 70.1-2000	螺栓M6X25	Bolt M6X25	2
24	GB5787-86	螺栓M6*16	Bolt M6X16	2
25	GB5787-86	螺栓M6*12	Bolt M6*12	1
26	SSB4-320000-0	摩擦衬片组合	Frication lining assy	4
27	SSA3-810000-0	前轮总成	Front wheel assy	2

## 19、转向立柱 Steering vertical pole

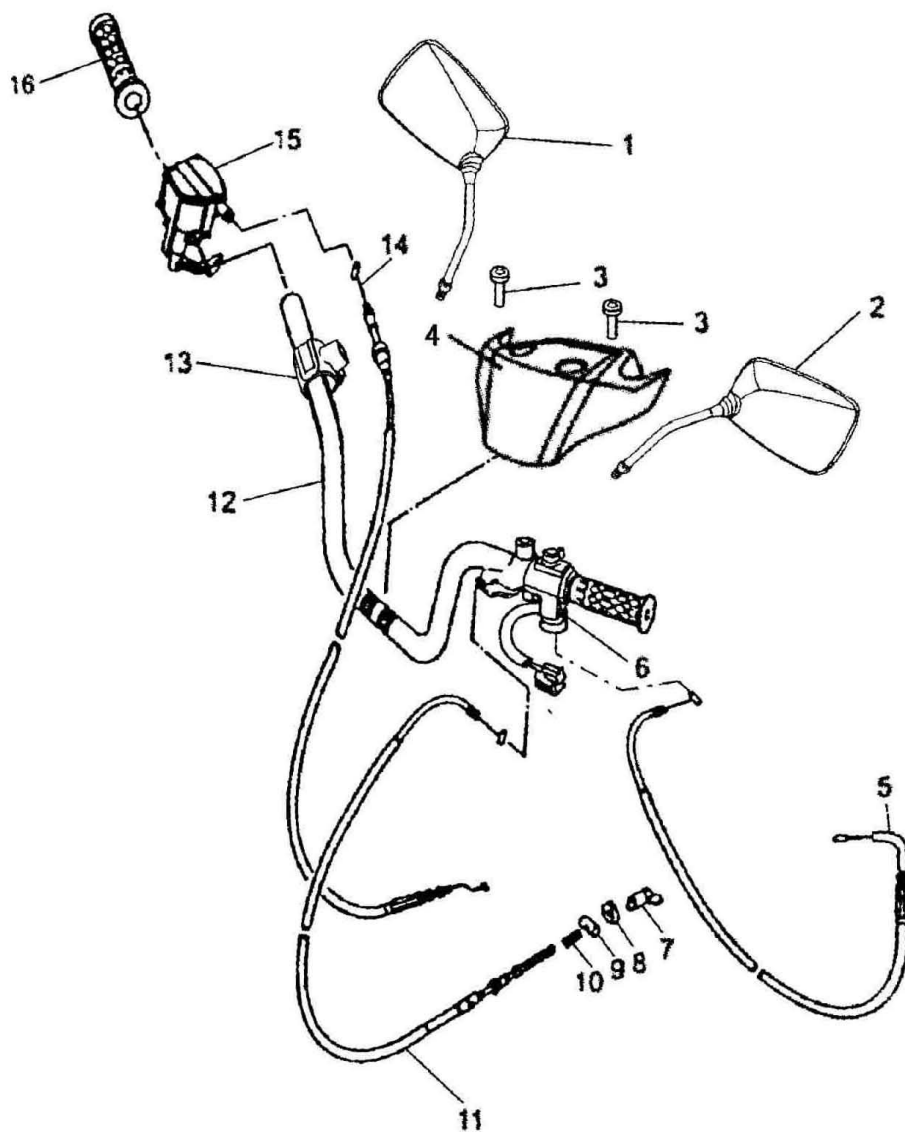




### 19、转向立柱 Steering vertical pole

1	SSA4-601000-2	转向立柱焊接	Steering upright column weld	1
2	SSA4-601501-0	防尘盖	Dust-proof cover	1
3	SSA4-600202-0	方向把上夹持器	Upper gripper block of steering b	2
4	SSA4-600201-0	方向把下夹持座	Lower grip slipper of steering ba	1
5	GB/T16674-1996	螺栓M8*50	Bolt M8*50	4
6	SSA0-000507-0	转向立柱夹持座	Grip slipper of steering upright c	2
7	SSA0-000607-0	密封圈	Sealing ring	2
8	SSA0-012000-0	线夹组合	Wire clip unit	1
9	GB5782-2000	螺栓M8*60	Bolt M8*60	2
10	SSA0-000407-0	锁紧垫片	Locking shim	1
11	SSA0-000011-0	衬套	Bushing	2
12	GB97.1-2000	垫圈10	Washer 10	1
13	GB6178-1986	螺母M10	Nut M10	1
14	GB91-2000	开口销2.5*24	Cotter pin 2.5*24	1
15	SSA4-602001-0	拉杆	Tension rod	2
16	SSA4-604000-0	转向拉杆球销总成1	Steering tension rod ballpin assy	2
17	SSA4-605000-0	转向拉杆球销总成2	Steering tension rod ballpin assy	2
18	GB6176-2000	螺母M12*1.25	Nut M12*1.25	2
19	SSA4-602002-0	螺母M12*1.25 (左)	Nut M12*1.25(Left)	2
20	GB6181-1986	螺母M12*1.25	Nut M12*1.25	4
21	GB91-2000	开口销3.2*24	Cotter pin 3.2*24	4

## 20、方向把操纵系统 Steering bar operation system



- 46 -

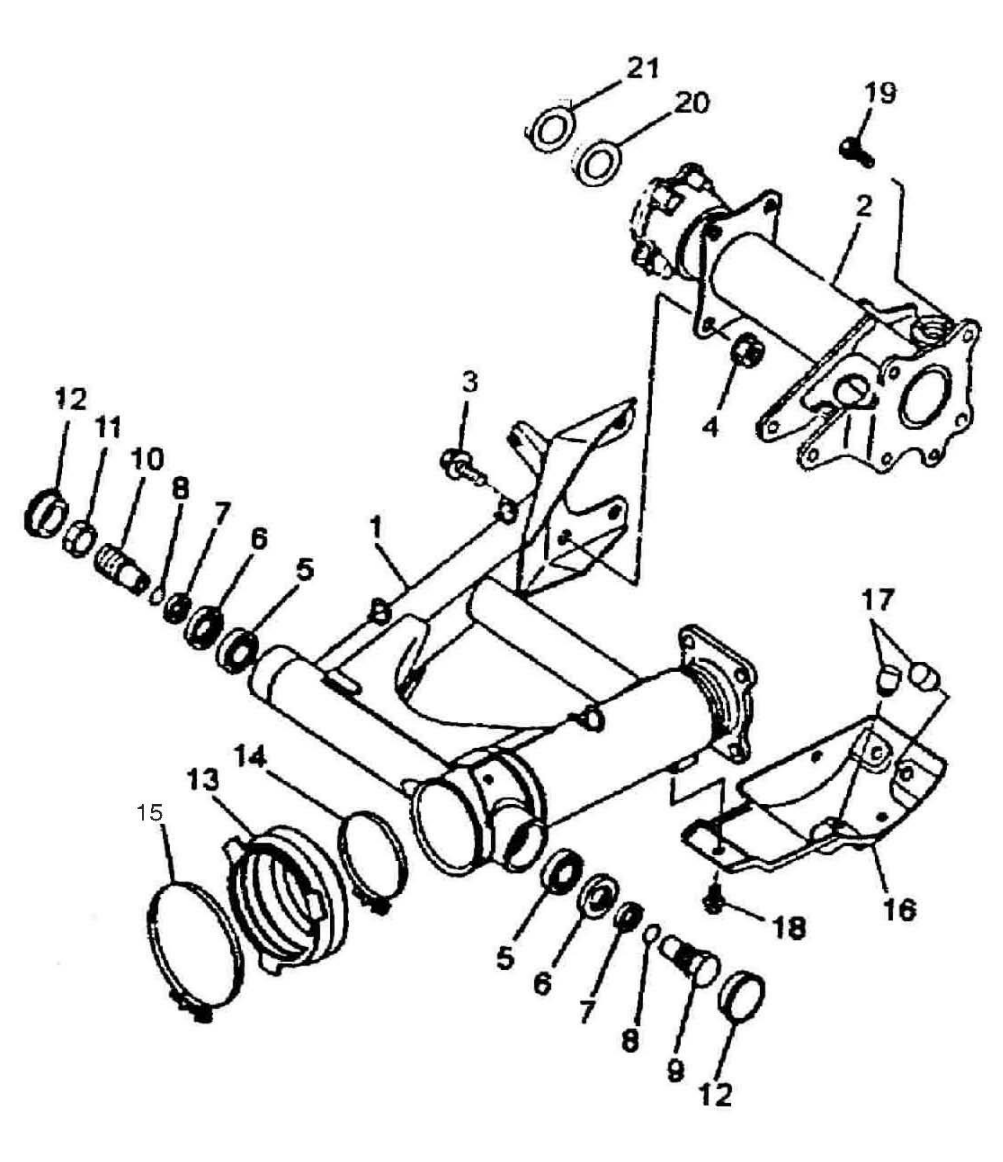
## 20、方向把操纵系统 Steering bar operation system

1	SSA4-510000-2	左后视镜	Left rear view mirror	1
2	SSA4-520000-2	右后视镜	Right rear view mirror	1



1	JS150.00-03	手把箍带	Handle bar band	1
2	SSC4-532000-0	后刹开关	Rear brake switch	1
3	SSA4-102000-0	左手柄座	Left lever seat assy	1
4	JS150.30-53	螺母	Nut	2
5	JS150.30-54	拉索调整螺钉	Ajusting screw of cable	1

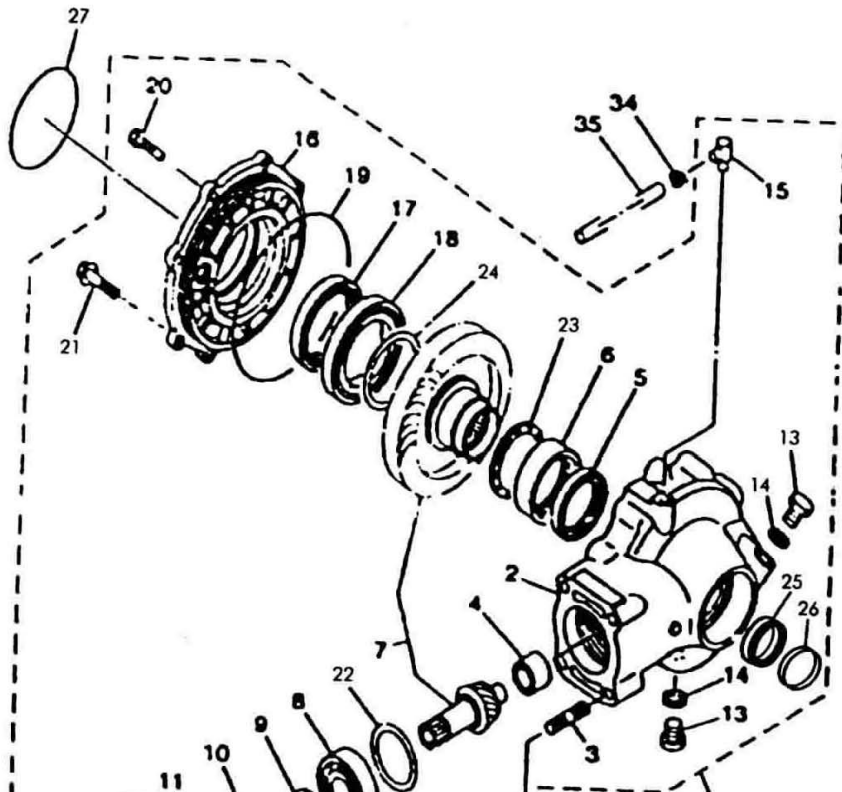
## 22、后轮叉组合 Rear wheel fork unit

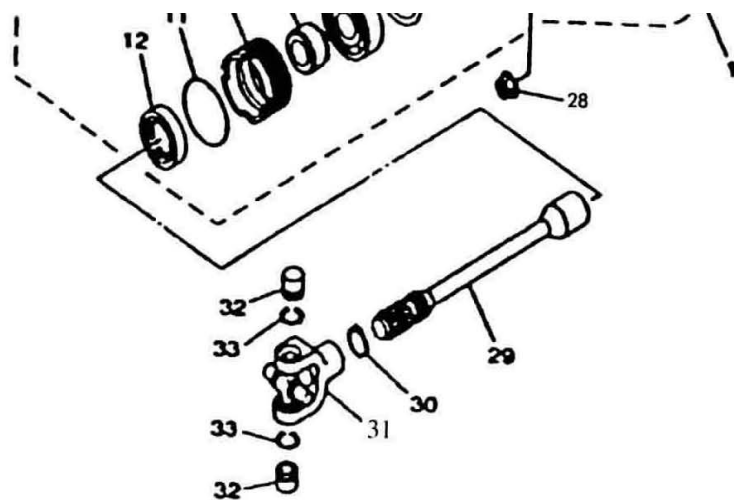


## 22、后轮叉组合 Rear wheel fork unit

1	SSA3-611000-0	后轮叉组合	Rear wheel fork unit	1
2	SSA3-612000-0	后轮轴套筒	Rear wheel axle sleeve	1
3	Q/JR YP33-1985	螺栓M12*1.25*25	Bolt M12*1.5*25	4
4	Q/JR YP33-1985	螺母M12*1.25	Nut M12*1.25	4
5	GB/T 297-1994	轴承 30203	Bearing 30203	2
6	SSA3-614000-0	油封	Oil seal	2
7	SSA3-610001-0	轴套	Collar	2
8	JB/T 6659-1993	O 型圈1.22*17	O-ring 1.22*17	2
9	SSA0-000006-0	后臂联接螺栓（左）22X45	Rear arm connection bolt(left)	1
10	SSA0-000005-0	后臂联接螺栓（右）	Rear arm connection nut(right)	1
11	SSA0-000007-0	后臂螺母 M22(右)	Rear arm nut M22(Right)	1
12	SSA3-000506-0	后臂轴防尘盖	Rear arm dust-proof cover	2
13	SSA3-610601-0	橡胶套管	Rubber covering pipe	1
14	SSA0-006000-0	传动轴夹箍组合（后）	Driving axle clamp unit(rear)	1
15	SSA0-005000-0	传动轴夹箍组合（前）	Driving axle clamp unit(front)	1
16	SSA0-000404-0	齿轮箱下盖	Lower cover of gear box	1
17	SSA0-000605-0	齿轮箱下盖缓冲垫	Buffering pad of lower cover of g	3
18	GB/T16674-1996	螺栓M8*12	Bolt M8*12	2
19	Q/JR YP33-1985	螺栓M10*1.25*25	Bolt M10*1.25*25	4
20	SSA3-617000-0	油封	Oil seal	1
21	GB/T276-1994	轴承6206-2RS	Bearing 6206-2RS	1

## 23、后驱动齿轮箱组件 Rear driving gear box unit



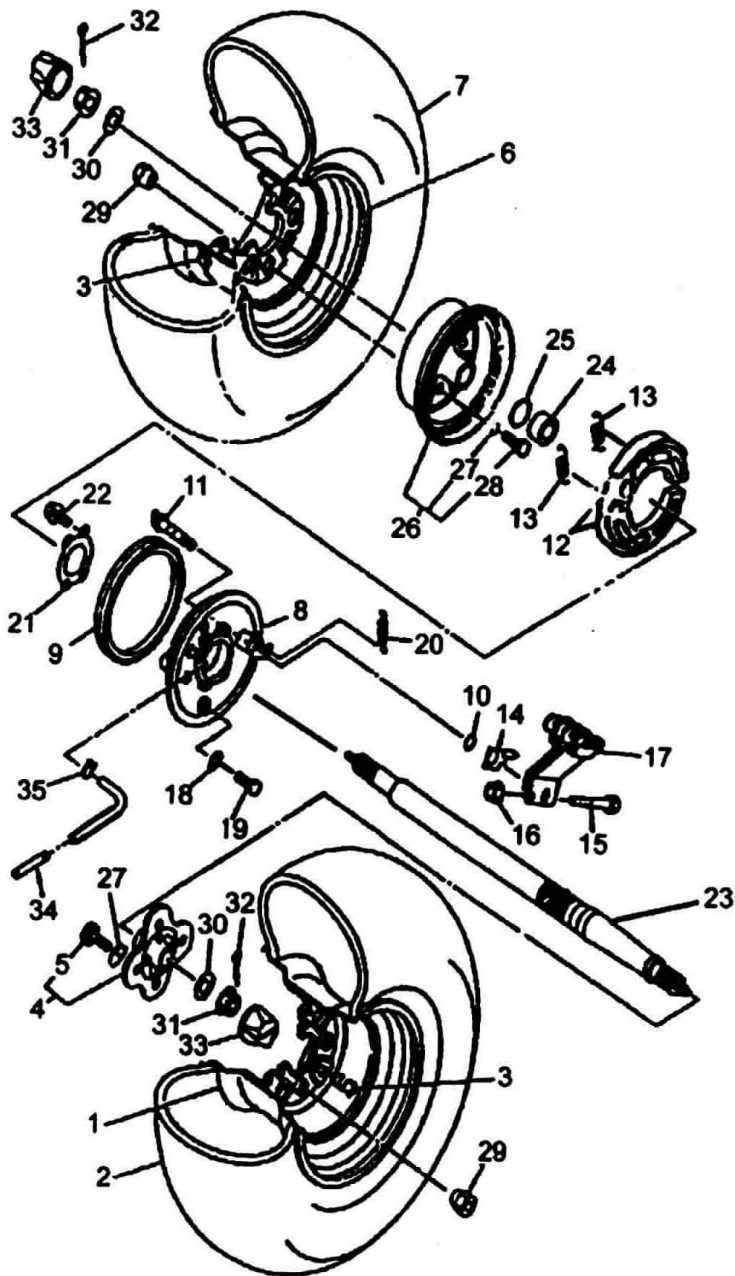


### 23、后驱动齿轮箱组件 Rear driving gear box unit

1	SSA3-930000-0	后驱动齿轮箱组件	Rear driving gear box unit	1
2	SSA3-930201-0	驱动齿轮箱体	Driving gear box body	1
3	SSA3-930001-0	双头螺柱	Double-head screw	4
4	SSA3-936000-0	滚针轴承（小）	Needle bearing (small)	1
5	SSA3-933000-0	油封	Oil seal	1
6	SSA3-935000-0	滚针轴承（大）	Needle bearing (big)	1
7	SSA3-937000-0	锥齿轮付	Tapered gear pair	1
8	GB/T 297-1994	轴承6305	Bearing 6305	1
9	SSA3-930002-0	衬套	Lining	1
10	SSA3-930004-0	轴承衬圈	Bearing race	1
11	SSA3-930601-0	O形圈	O-ring	1
12	SSA3-932000-0	轴承衬圈油封	Bearing race oil seal	1
13	SSA3-930003-0	螺塞	Screw plug	2
14	ZA1-600401-0	密封垫圈	Gasket	2
15	SSA3-930202-0	通气接头	Air-draining joint	1
16	SSA3-930203-0	驱动齿轮箱盖	Driving gear box cover	1
17	SSA3-934000-0	驱动齿轮箱盖油封	Driving gear box cover oil seal	1
18	GB/T276-1994	轴承16013	Bearing 16013	1
19	GB/T3452.1-1992	O形圈155*2.65G	O-ring 155*2.65G	1
20	GB/T9074.1-2000	螺栓组合件M8*25	Bolt unit M8*25	6
21	Q/JR YP33-1985	螺栓M10*1.25*45	Bolt M10*1.25*45	2
22	SSA3-930401-0	推动垫片（0.15）	Thrust pad(0.15)	1
23	SSA3-930402-0	推动平垫（1.6）	Thrust flat pad(1.6)	1
24	SSA3-930403-0	环形齿轮垫片（0.4）	Ring-shape gear pad(0.4)	1
25	GB/T 276-1994	轴承6008-z	Bearing 6008-z	1
26	SSA3-931000-0	油封	Oil seal	1
27	GB/T3452.1-1992	O形圈85*3.55G	O-ring 85*3.55G	1
28	Q/JR YP4-2000	螺母M10*1.25	Nut M10*1.25	4

29	SSA0-000008-0	传动轴	Driving axle	1
30	GB/T894.2-1986	挡圈21	Circlip 21	1
31	FG-580304-0	后接头	Rear joint	1
32	FG-580305-0	滚针轴承	Needle bearing	2
33	FG-580402-0	卡圈	Clip	2
34	SSA0-000802-0	制动通气管夹子	Brake air-drain clamp	1
35	SSA0-000517-0	齿轮箱通气管	Gear box air-drain	1

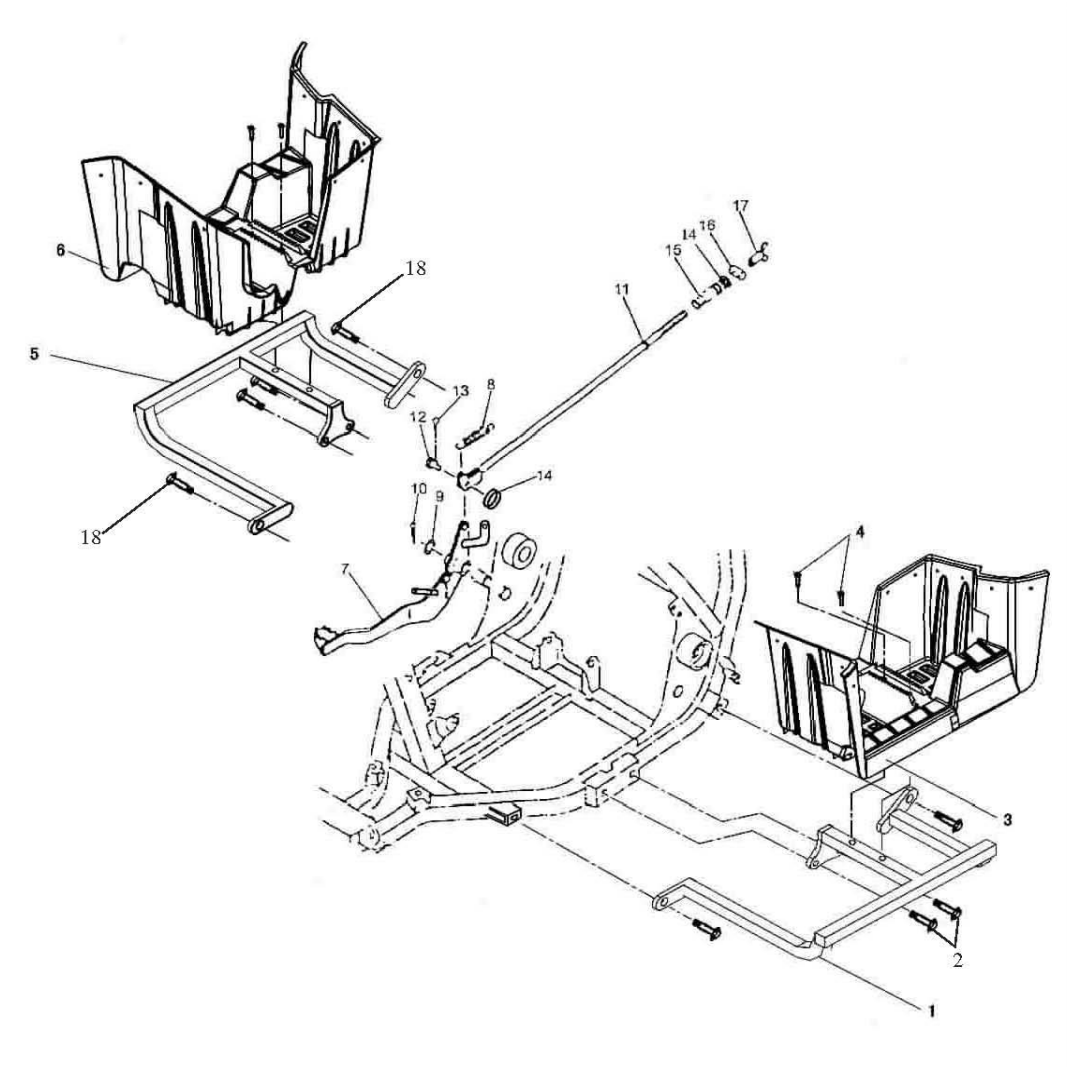
## 24、后轮系统 Rear wheel system



## 24、后轮系统 Rear wheel system

1	SSA3-821000-0	后轮辋组合 (左)	Rear rim unit(left)	1
2	SSA3-820601-0	后轮胎 (左)	Rear tire (left)	1
3	GB12836.1-1999	无内胎气门嘴z2-01-1	Air drain mouth without tyre tube	2
4	SSA0-017301-0	后轮联接板	Rear wheel connecting plate	1
5	SSA4-312002-0	螺栓	Bolt	4
6	SSA3-821000-0	后轮辋组合 (右)	Rear rim unit (right)	1
7	SSA3-820601-0	后轮胎 (右)	Rear tire(right)	1
8	SSA4-321000-0	后制动盖组合	Rear brake cover unit	1
9	SSA4-314000-0	防尘密封 (165x190x17)	Dust-proof seal	1
10	GB3452.1-1992	O形圈14*2.65G	O-ring 14*2.65G	1
11	SSA4-320001-0	后制动凸轮轴	Ram shaft of rear brake	1
12	SSA4-313000-0	制动蹄块组合	Brake shoe unit	1
13	SSA4-310701-0	拉簧	Tension spring	2
14	SSA4-301404-0	刹车指示片	Brake indicating plate	1
15	CY80.23-13	螺栓	Bolt	1
16	GB/T6170-2000	螺母M6	Nut M6	1
17	SSA4-322000-0	后制动臂组合	Rear brake arm unit	1
18	SSA4-310402-0	密封垫	Gasket	1
19	GB/T5783-2000	螺栓M6*12	Bolt M6*12	1
20	SSA4-320701-0	制动拉簧	Brake tension spring	1
21	SSA0-000406-0	后制动轴承挡块	Rear brake bearing block	1
22	GB/T5787-1996	螺栓M8*40	Bolt M8*40	4
23	SSA0-000009-0	后轮轴	Rear wheel axle	1
24	SSA3-000405-0	后制动盖平垫	Flat washer of rea brake cover	1
25	GB/T3452.1-1992	O形圈30*1.8G	O-ring 30*1.8G	1
26	SSA0-009301-0	后制动毂	Rear brake hub	1
27	JB/T 6659-1993	O形圈11.8*1.22	O-ring 11.8*1.22	4
28	SSA4-312002-0	螺栓	Bolt	4
29	SSA0-000301-0	前后轮联结螺母	Connecting nut of front and rear	8
30	GB/T96.1-2002	垫圈16	Washer 16	2
31	SSA0-000013-0	后轮轴螺母M16	Rear wheel axle nut M16	2
32	GB/T91-2000	开口销4*30	Cotter pin 4*30	2
33	SSA0-000604-0	前后轮防尘盖	Dust-proof cover of front and rear	2
34	SSA0-000516-0	后制动器通气管	Air flow pipe of rear brake	1
35	SSA0-000802-0	制动器通气管夹子	Air flow pipe clip of brake	1

## 25、脚踏操纵 Kick starting operation

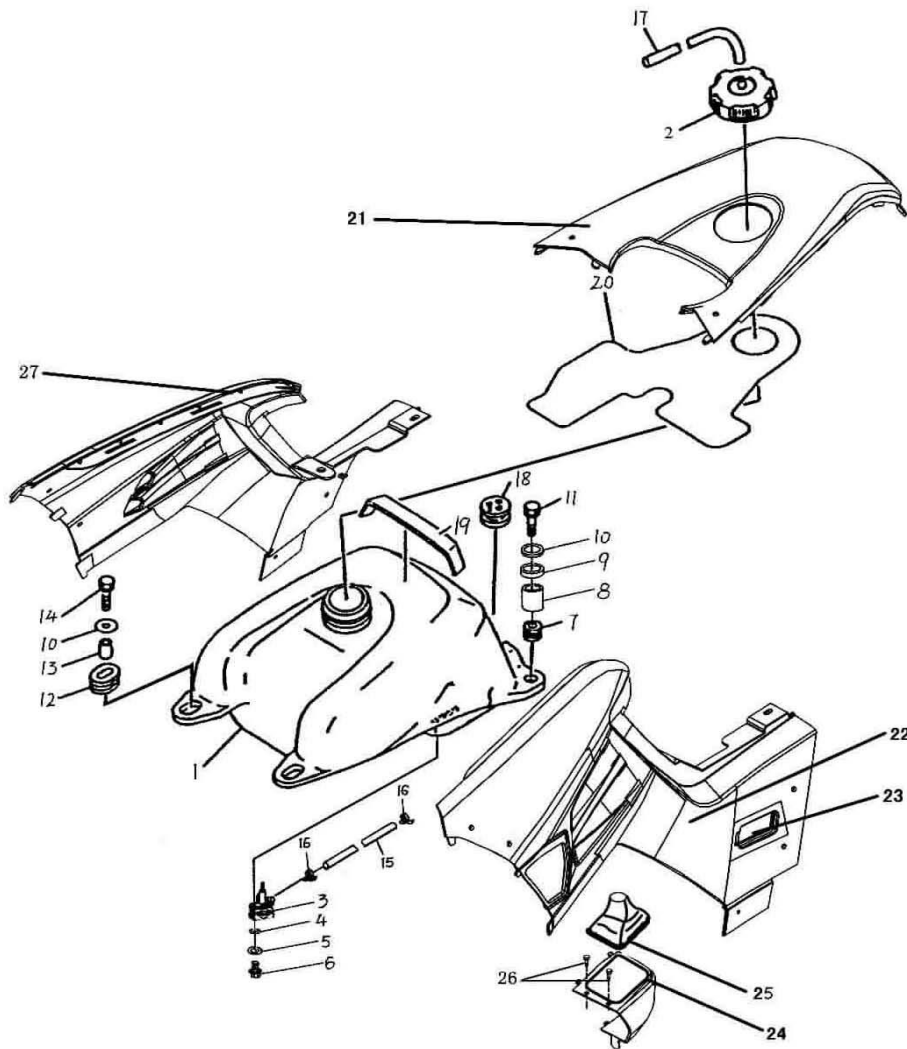


## 25、脚踏操纵 Kick starting operation

1	SSM3-660000-0	左搁脚支架	Anchor of left footrest	1
2	GB/T16674-1996	螺栓M10*25	Bolt M10*25	4
3	SSM0-000514-0	左搁脚板	Board of left footrest	1
4	GB/T16674.1-2004	螺栓M8*20	Bolt M8*20	4
5	SSM3-670000-0	右搁脚支架	Anchor of right footrest	1
6	SSM0-000515-0	右搁脚板	Board of right footrest	1
7	SSM4-330000-0	后制动踏板	Rear brake pedal	1
8	SSA0-000801-0	后制动拉簧	Rear brake tension spring	1
9	GB/T95-2002	垫圈14	Washer 14	1
10	GB/T91-2000	开口销4*30	Cotter pin 4*30	1
11	SSA0-003000-2	后制动拉杆组合	Rear brake tension rod unit	1

12	SSA0-000004-0	定位销轴	Alignment pin	1
13	GB/T91-2000	开口销2*16	Cotter pin 2*16	1
14	GB/T96.1-2002	垫圈6	Washer 6	2
15	JS125.00-26	弹簧	Spring	1
16	CY80.00-10	销	Pin	1
17	SSA0-000201-0	调节螺母	Adjusting nut	1
18	GB/T16674.1-2004	螺栓M8*25	Bolt M8*25	4

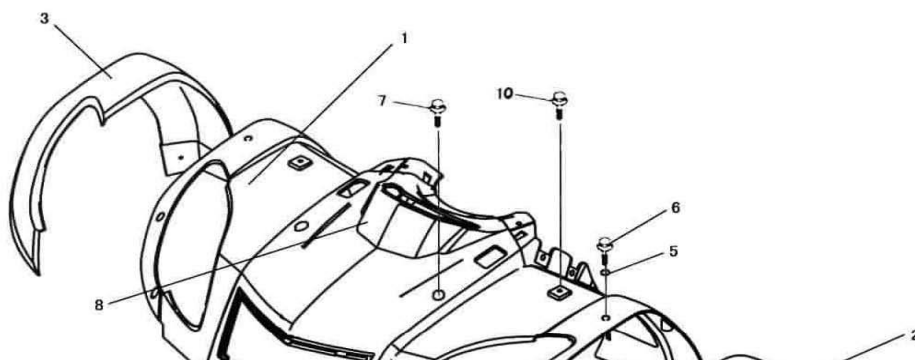
## 26、油箱、油开关 Fuel tank, Fuel cock

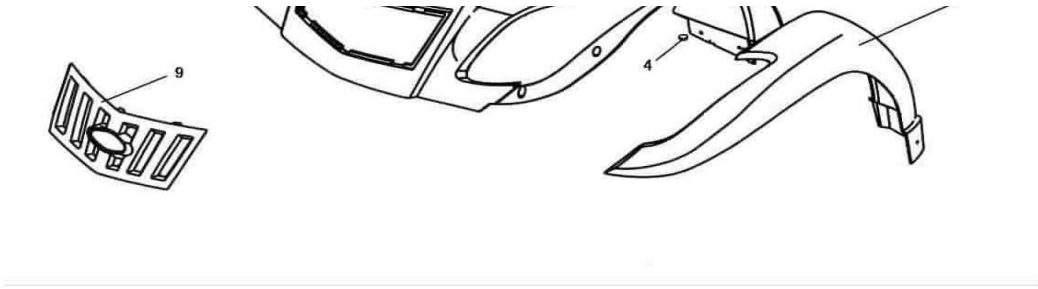


## 26、油箱、油开关 Fuel tank, Fuel cock

1	SSA3-311000-0	油箱体	Fuel tank body	1
2	SSA3-312000-0	油箱盖	Fuel tank cover	1
3	SSA3-330000-0	油开关	Fuel lock	1
4	SSA3-310601-0	垫圈6	Washer 6	2
5	GB/T97.1-2002	垫圈6-140HV	Washer 6-140HV	2
6	GB/T818-2000	螺钉M6*12	Screw M6*12	2
7	SSA0-000609-0	油箱胶套2	Rubber bush of fuel tank	2
8	SSA0-000003-0	油箱上盖安装衬套	Installing bushing of upper fuel tank	2
9	SSA0-000012-0	垫圈	Washer	2
10	SSA0-000403-0	平垫圈30	Flat washer 30	4
11	GB/T9074.15-1998	螺栓M6*40	Bolt M6*40	2
12	SSA0-000608-0	油箱胶套	Rubber bush of fuel tank	2
13	SSA0-000002-0	油箱安装衬套	Installing bushing of fuel tank	2
14	GB/T9074.15-1998	螺栓M6*35	Bolt M6*35	2
15	FG-700602-0	进油管	Fuel intake pipe	1
16	FG-700701-0	钢丝夹	Steel wire clasp	2
17	HG6-408-79	胶管5270-Φ5*1.5长 (mm)	Hose 5270-Φ5*1.5 Long(mm)	1
18	FG-700601-0	通气管支撑垫	Supporting damper of airflow pipe	1
19	SSA3-310501-0	减震垫	Damper	1
20	SSL0-000601-0	油箱胶垫	Fuel tank rubber damper	1
21	SSM0-000506-0	油箱上罩	Upper cover of fuel tank	1
22	SSM0-000507-0	左侧盖	Left side cover	1
23	SSM0-000526-0	电器罩	Electrical cover	1
24	SSM0-000523-0	倒档手柄罩	Reverse lever cover	1
25	SSM0-006000-0	倒档装饰罩组合	Reverse lever decorative cover assembly	1
26	ZA0-000312-0	自攻螺钉	Self-tapping screw	1
27	SSM0-000508-0	右侧盖	Right side cover	1

## 27、前装饰板组合 Front decorative plate assy

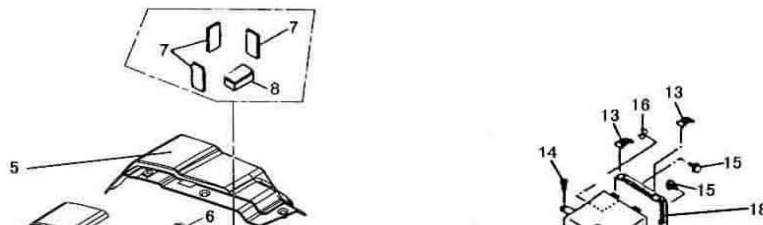


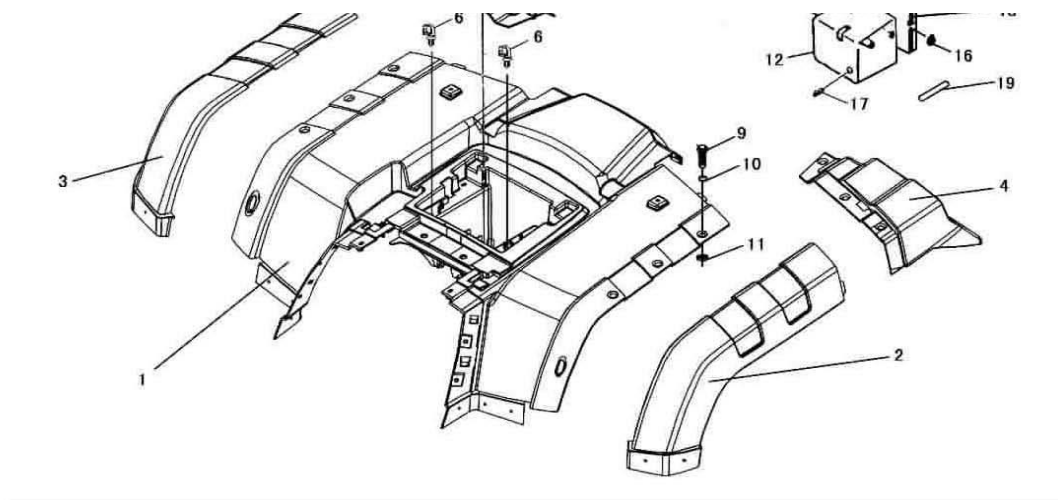


## 27、前装饰板组合 Front decorative plate assy

1	SSM0-000502-0	前挡泥板	Front fender	1
2	SSM0-000512-0	前照灯外罩(左)	Headlight cover (left)	1
3	SSM0-000513-0	前照灯外罩(右)	Headlight cover (right)	1
4	GB/T6184-2000	螺母M6	Nut M6	28
5	GB/T96.1-2002	垫圈6	Washer 6	28
6	GB/T947-1988	螺钉M6*16	Screw M6*16	28
7	Q/JR YP1-92	螺栓CM6*16	Bolt CM6*16	2
8	SSM0-000509-0	仪表盖	Instrument cover	1
9	SSM0-000504-0	前面罩	Front face cover	1
10	Q/JR YP1-92	螺栓CM6*20	Bolt CM6*20	2

## 28、后挡泥板、工具箱 Rear fender, tool kit

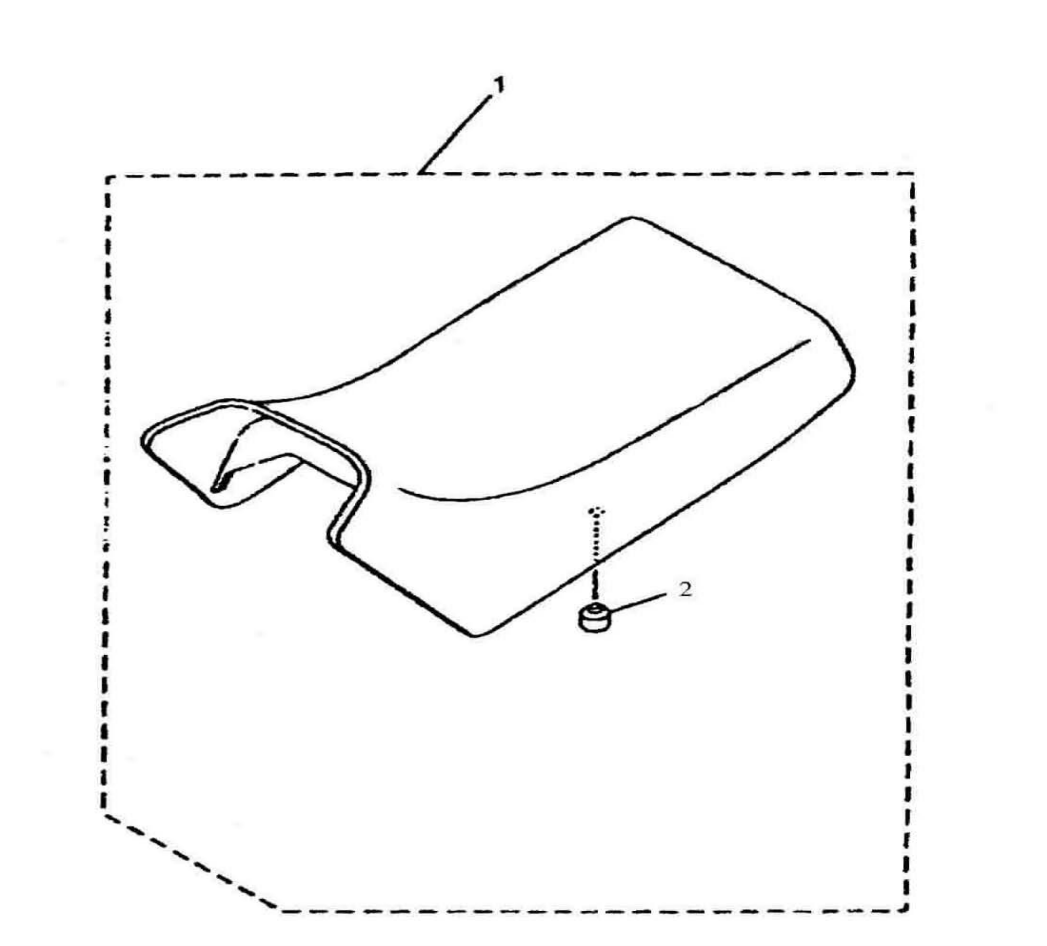




## 28、后挡泥板、工具箱 Rear fender, tool kit

1	SSM0-000501-0	后挡泥板	Rear fender	1
2	SSM0-000510-0	后挡泥板檐板(左)	Rear fender flap (left)	1
3	SSM0-000511-0	后挡泥板檐板(右)	Rear fender flap (right)	1
4	SSM0-000516-0	尾灯罩(左)	Taillight cover (left)	1
5	SSM0-000517-0	尾灯罩(右)	Taillight cover (right)	1
6	SSA0-000511-0	线夹3	Cable clip 3	2
7	CY80.02-14	防震垫	Shock proof pad	3
8	SSA0-000601-0	蓄电池侧垫	Battery side pad	2
9	GB/T947-1998	螺栓 M6*16	Bolt M6*16	22
10	GB/T96.1-2002	垫圈 6	Washer 6	22
11	GB/T6184-2000	螺母 M6	Nut M6	22
12	SSA0-010000-0	工具箱组合	Tool kit unit	1
13	SSA0-000610-0	工具箱扣	Tool kit catch	2
14	SSA0-013000-0	塑料膨胀螺钉	Plastic expansion screw un	2
15	GB/T16674-1996	螺栓 M6*16	Bolt M6*16	2
16	GB/T6187.1-2000	螺母 M6	Nut M6	2
17	SSA0-000512-0	线夹4	Cable clip 4	1
18	SSM0-010502-0	工具箱盖	Tool kit cover	1
19	SSA0-010401-0	销	Pin	2

## 29、座垫 Cushion



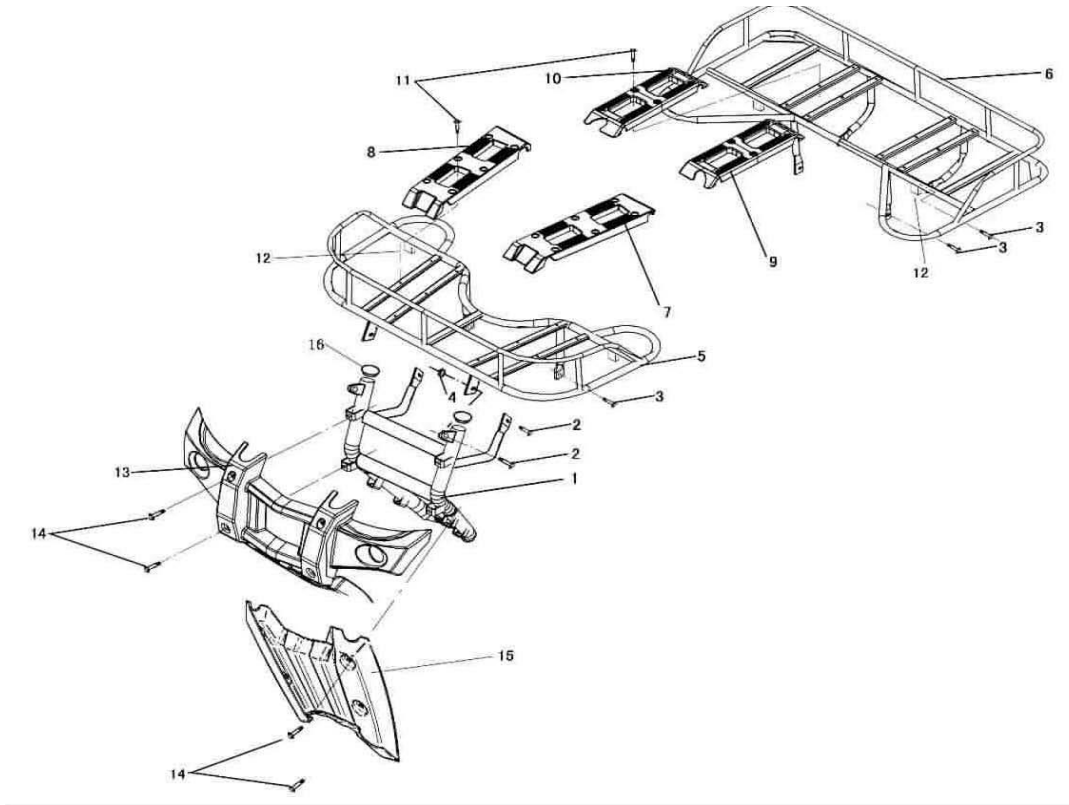
- 68 -

## 29、座垫 Cushion

1	SSM3-410000-0	座垫	Seat	1
2	SSA3-410601-0	缓冲垫	Damper	2

## 30、前后防护架 Front & rear guard bracke



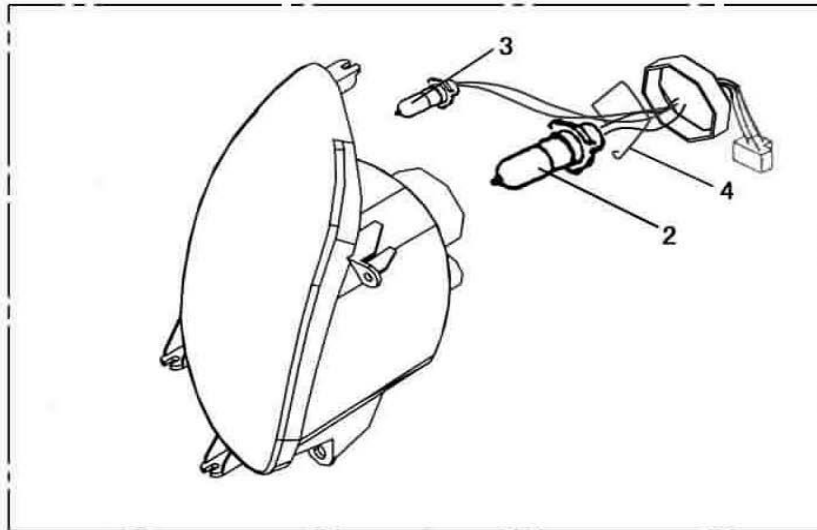


### 30、前后防护架 Front & rear guard bracket

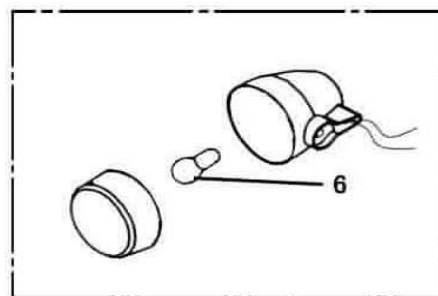
1	SSM0-730000-0	保险杠	Fender guard	1
2	GB/T16674.1-2004	螺栓 M8*20	Bolt M8*20	4
3	GB/T16674.1-2004	螺栓 M8*16	Bolt M8*16	6
4	GB/T6184-2000	螺母 M8	Nut M8	1
5	SSM3-710000-0	前货架	Front luggage carrier	1
6	SSM3-720000-0	后货架	Rear luggage carrier	1
7	SSM0-000518-0	前货架罩(左)	Front guard frame cover(left)	1
8	SSM0-000519-0	前货架罩(右)	Front guard frame cover(right)	1
9	SSM0-000520-0	后货架罩(左)	Rear guard frame cover(left)	1
10	SSM0-000521-0	后货架罩(右)	Rear guard frame cover(right)	1
11	GB/T16674.1-2004	螺栓 M6*12	Bolt M6*12	24
12	Q/JR YP1-92	组合螺栓 CM6*20	BoltC M6*20	4
13	SSM0-000503-0	保险杠装饰罩	Decorative house of bumper	1

14	GB/T16674.1-2004	螺栓 M8*12	Bolt M8*12	8
15	SSM0-000522-0	保险杠下装饰罩	Lower decorative house of bump	1
16	SSA0-000501-0	保险杠防尘罩	Dust-proof cover of bumper	2
17	SSA0-003000-2	后反光片	Rear reflector	2

### 33、前照灯、前转向灯 Headlight & turn signals



1

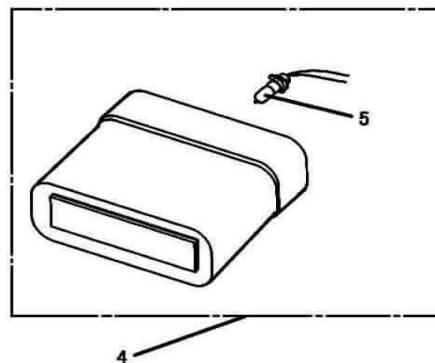
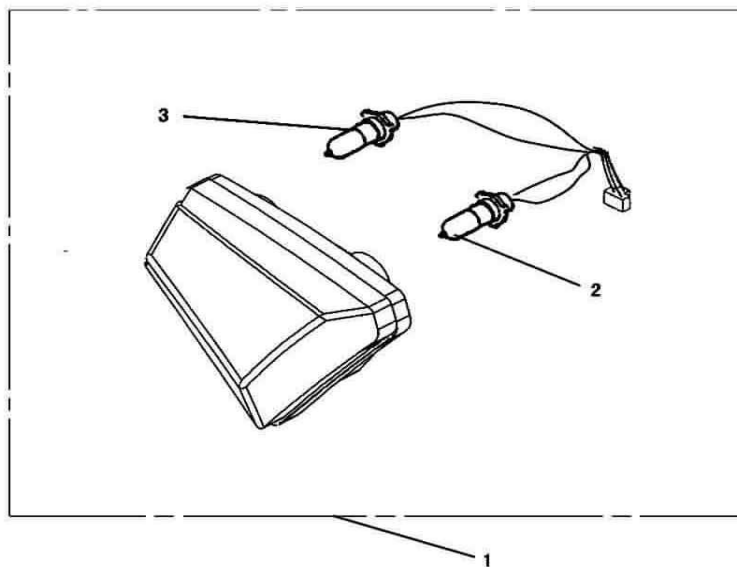


5

### 33、前照灯组件及转向灯组件 Headlight unit & Turn signals

1	SSM5-611000-0	左前照灯组件	Left headlight assy	1
	SSM5-612000-0	右前照灯组件	Right headlight assy	1
2		前照灯灯泡 12V 35/35W	Headlight bulb 12V 35/35W	2
3		位置灯灯泡12V 5W	Sidelight bulb 12V 5W	2
4		钢丝夹	Steel wire clip	2
5	SSM5-621000-0	前左转向灯	Front left turn light	1
	SSM5-622000-0	前右转向灯	Front right turn light	1
6		转向灯灯泡12V 10W	Turn light bulb 12V 10W	2

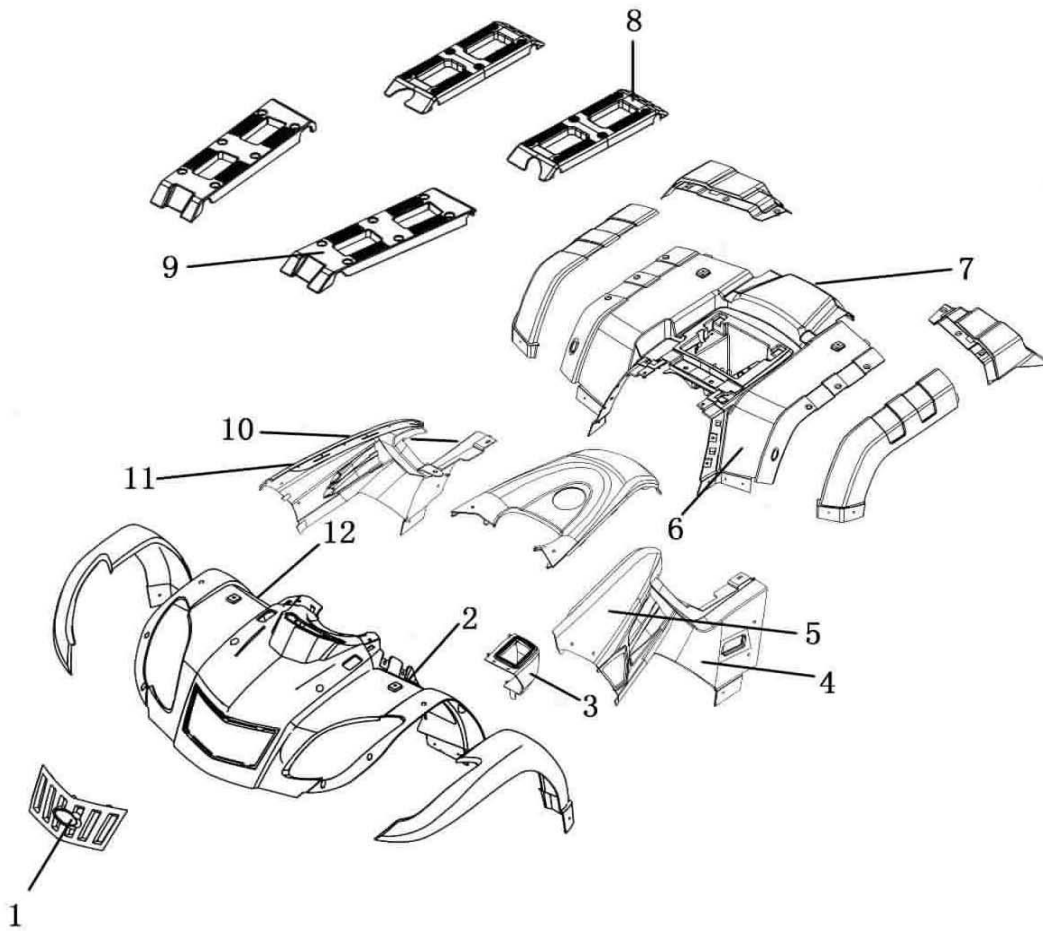
### 34、尾灯、牌照灯 Taillight & license light



### 34、尾灯组件 Taillight unit

1	SSM5-631000-0	左尾灯组件	Left taillight assy	1
	SSM5-632000-0	右尾灯组件	Right taillight assy	1
2		尾灯灯泡12V 21W/5W	Taillight bulb 12V 21W/5W	2
3		转向灯灯泡12V 10W	Turn light bulb 12V 10W	2
4	SSM5-650000-0	牌照灯组件	License light assy	1
5		灯泡12V 5W	Bulb 12V 5W	1

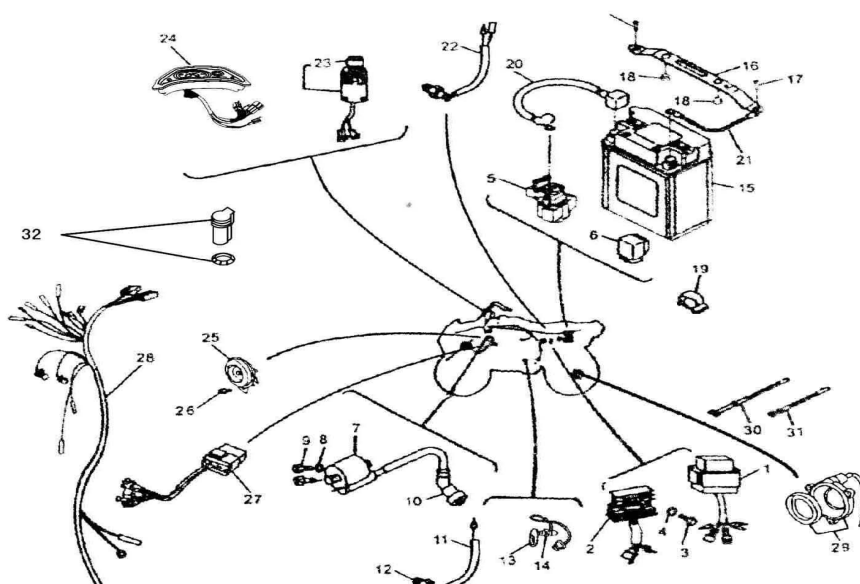
### 35、标志粘贴 Marking sticker



### 35、标志粘贴 Marking sticker

1	SSMTH-000501-0	前面罩标牌	Label of front panel	1
2	SSMTH-000508-F2	换档标志	Shift mark	1
3	SSMTH-000509-F2	倒档标志	Reverse mark	1
4	SSMTH-000504-0	左侧盖贴花2	Sticker 2 of left side cover	1
5	SSMTH-000502-0	左侧盖贴花1	Sticker 1 of left side cover	1
6	SSMTH-000507-F2	警告标志 2	Warning mark 2	1
7	TCO-006021-1C	厂牌贴花	Factory brand sticker	1
8	SSMTH-000511-F2	后载物极限标志	Rear mark of front luggage carriage	1
9	SSMTH-000510-F2	前载物极限标志	Limit mark of front luggage carriage	1
10	SSMTH-000505-0	左侧盖贴花2	Sticker 2 of right side cover	1
11	SSMTH-000503-0	右侧盖贴花1	Sticker 1 of right side cover	1
12	SSMTH-000506-F2	警告标志 1	Warning mark 1	1

### 36、电器系统 Electric system





### 36、电器系统 Electric system

1	FG-803000-F2	可控硅触发器CDI	CDI unit	1
2	FG-805000-F2	整流调节器	Rectification regulator	1
3	GB/T16674-1996	螺栓 M6*30	Bolt M6*30	1
4	GB/T93-1987	垫圈6	Washer 6	1
5	FG-804000-F2	起动继电器组件	Start relay	1
6	SSC5-540000-0	切断继电器	Shut down relay	1
7	FG-802000-0	高压线圈组件	High pressure coil assy	1
8	Q/JR YP1-1985	组合螺栓 M5*16	Bolt unit M5*16	2
9	GB/T93-1987	垫圈5	Washer 5	2
10	FG-802003-0	护帽	Protecting cap	1
11	FG-509000-0	倒档开关	Reverse switch	1
12	FG-500405-0	垫圈	Washer	1
13	F4-D70000-0	档位传感器	Gear sensor	1
14	GB6171-86	螺母M10*1	Nut M10*1	1
15	SSA5-310000-0	蓄电池组件	Battery assy	1
16	SSA0-000402-0	蓄电池压块	Prtesure block of battery	2
17	GB/T16674-1996	螺栓 M6*25	Flange bolt M6*25	2
18	SSA0-000602-0	蓄电池压块缓冲垫	Butter pad of battery pressure blc	2
19	SSA0-000511-0	线夹3	Cable clip3	1
20	SSA5-312000-0	蓄电池正极导线	Battery positive lead	1
21	SSA5-311000-0	接地线组合	Earth wire assy	1
22	SSA5-530000-3	后制动开关	Rear brake switch	1
23	SSM5-510000-0	总开关锁	Main switch lock	1
24	SSM5-400000-0	仪表	Instrument	1
25	SSA5-710000-2	喇叭	Horn assy	1
26	GB5787-89	螺栓M8*16	Bolt M8*16	11
27	SSC5-770000-0	应急信号控制器	Emergerey signal controller	1
28	SSM5-320000-0	电缆	Cable	1
29	SSM5-800000-0	传感器组件	Sensor units	1
30	JS150.00-039	电缆箍带	Cable band	6

31	JS150.00-03	手把箍带	Handle bar band	2
32	SSC5-360000-0	外接电源插座	External power source socket	1

































80  
120















qq516045931朱























































